

ENGINEERING INC. HEMISPHERE
 CONSULTING ENGINEERS
 10950 - 119 Street, Edmonton, Alberta, T5H 3P5
 TEL (780) 452-1800 FAX (780) 453-6205
 HEM P11009

UNDERGROUND FACILITY MAP LEGEND:

- 1 PHASE PADMOUNT TRANSFORMER 14.4KV
- SECONDARY JOINT USE PEDESTAL
- STREETLIGHT LUMINAIRE
- STREETLIGHT POLE
- PRIMARY CABLE SPLICE
- TRANSFORMER SIDE BOX
- 1 PHASE 14.4KV 1AL PRIMARY CONDUCTOR
- 2 PHASE 14.4KV 1AL PRIMARY CONDUCTOR
- 3 PHASE 14.4KV 1AL PRIMARY CONDUCTOR
- 4/0 SECONDARY CONDUCTOR
- #4 AL STREETLIGHT CONDUCTOR
- 1/0 SERVICE DROP c/w QUANTITY
- SERVICE DROP 1.0m FROM PROPERTY LINE
- PRE-SERVICE LOT FOR FUTURE
- DUCT C/W QUANTITY & SIZE
- THREE PHASE SWITCHING CUBICAL
- FIRE HYDRANT
- GAS LINE
- R2 AREA (DOUBLE 100AMP SERVICE TO LOT)

PERMIT TO PRACTICE
 HEMISPHERE ENGINEERING INC.
 Signature: *[Signature]*
 Date: Dec 24 / 2013
 PERMIT NUMBER: P 4520
 The Association of Professional Engineers, Geologists and Geophysicists of Alberta

RECORD DRAWING	DATE	BY	CHK'D
RECORD DRAWING	DEC 24, 2013	NI	WJM
ISSUED FOR CONSTRUCTION	NOV 26, 2012	NI/DL	JPR
PRELIMINARY DESIGN	APRIL 13, 2012	NI	JPR
ISSUED DESCRIPTION	DATE	BY	CHK'D

REVISION	DATE	BY	CHK'D
REVISION 6	DEC.06.2012	DL	JPR
REVISION 5	SEP.27.2012	NI	JPR
REVISION 4	SEP.19. 2012	NI	JPR
REVISION 3	AUG. 22, 2012	NI	JPR
REVISION 2	JUNE 27, 2012	NI	JPR
REVISION 1	APRIL 18, 2012	NI	JPR
REVISION DESCRIPTION	DATE	BY	CHK'D

Acceptance is for the Electrical Distribution System and/or Streetlighting only.
 Signature: _____

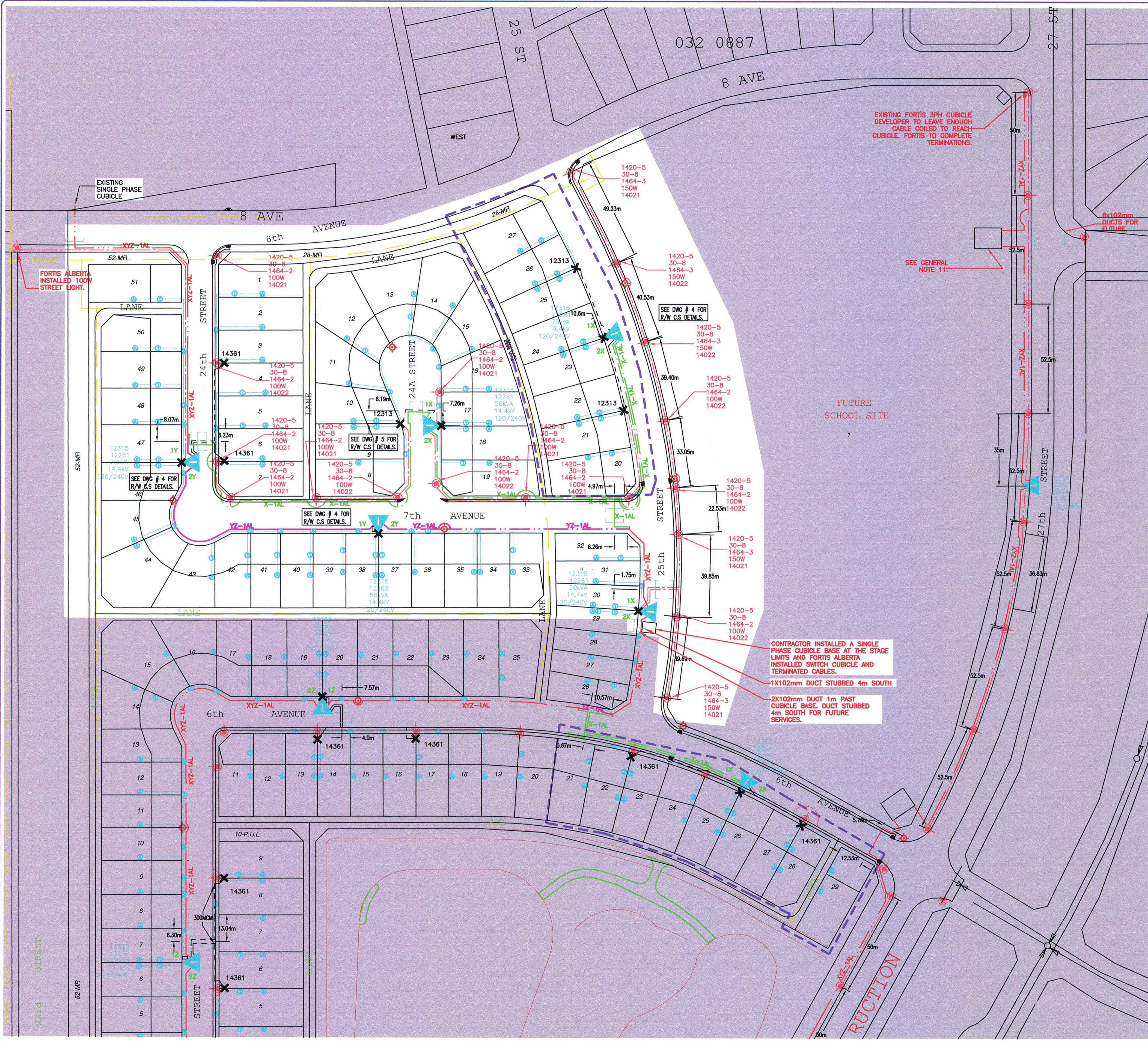
PROJECT:
ENSTRON SUBDIVISION - PHASE 1
 TITLE & LOCATION:
FACILITY MAP - PART 1 - STAGE 1A
TOWN OF WAINWRIGHT
S.E 1/4 SEC 32-44-06-W4

DRAWN BY:	NI/ND	CUSTOMER WORK ORDER NUMBER:	P11009
CHECKED BY:	JPR	REVISION NUMBER:	1 of 5
SCALE:	1:1000		
INITIAL DRAWING DATE:	2011-10-20		
DRAWING NUMBER:			



UPDATED BY: NI
RECORD DRAWING
 DATE: 12/24/2013
 Information Provided By:
 JATEC

FORTISALBERTA REFERENCE # 65218121



EXISTING FORTIS 3PH CUBICLE DEVELOPER TO LEAVE ENOUGH CABLE COILED TO REACH CUBICLE. FORTIS TO COMPLETE TERMINATIONS.

SEE GENERAL NOTE 11.

FUTURE SCHOOL SITE

CONTRACTOR INSTALLED A SINGLE PHASE CUBICLE BASE AT THE STAGE LIMITS AND FORTIS ALBERTA INSTALLED SWITCH CUBICLE AND TERMINATED CABLES.
 1X102mm DUCT STUBBED 4m SOUTH
 2X102mm DUCT 1m PAST CUBICLE BASE. DUCT STUBBED 4m SOUTH FOR FUTURE SERVICES.

NOTES:

- REFER TO FORTIS ALBERTA DISTRIBUTION STRUCTURES AND URD MANUALS FOR SPECIFICATIONS AND DETAILS NOT SHOWN ON THIS PLAN.
- SEE TYPICAL ROAD CROSS SECTIONS FOR TRENCH ALIGNMENTS AND FURNITURE PLACEMENT.
- ROAD CROSSINGS MAINTAINED A 3.0m CLEARANCE FROM ALL FIRE HYDRANTS, MANHOLES, CATCH BASINS AND VALVES.
- ALL ROAD CROSSINGS EXTENDED FROM TRENCH LINE TO TRENCH LINE.
- IF SPACE ALLOWED THE CABLES ARE NOT CROSSING EACH OTHER, THE COMMUNICATION CABLES CAN BE AT THE SAME LEVEL AS THE SECONDARY CABLES.
- MARKER TAPE PLACED 300mm ABOVE PRIMARY AND SECONDARY CABLES IN MAIN TRENCH FOR THE ENTIRE LENGTH OF MAIN TRENCH WHERE REQUIRED BY FORTISALBERTA. A MINIMUM OF 200mm SAND BACKFILL ABOVE (BACKHOED TRENCH) AND/OR BELOW CABLES.
- ALL CABLE UNDER ROADWAY LANES INSTALLED IN 102mm PVC PIPE.
- TRANSFORMER AND PEDESTAL PLACED CENTERED IN LINE WITH LOT PINS UNLESS OTHERWISE SPECIFIED. (SEE CROSS SECTION FOR ADDITIONAL INFORMATION).
- CENTER LINE OF TRANSFORMER LOCATED OVER CENTER LINE OF TRENCH UNLESS OTHERWISE SPECIFIED.
- MARKER BALLS INSTALLED AT ALL SERVICES LOCATION AND AT ALL ROAD CROSSINGS LOCATIONS.
- PEDESTALS ARE JOINT USE: FORTIS/TELUS/CABLE TV
- SECONDARY SERVICE DROPS FED FROM PEDESTALS AND/OR TRANSFORMER SIDE BOX.
- SERVICE DROPS 1.0m FROM LOT LINE. 30.0m TO BE COILED IN SERVICE DROP BOX WITH 300mm OF MARKER STAKE ABOVE FINAL GRADE.
- STREET LIGHTS CENTERED IN LINE WITH LOT PINS UNLESS OTHERWISE SPECIFIED (SEE CROSS SECTION FOR DETAILS.)
- ALL SERVICES ARE 100 AMP SERVICES WITH EXCEPTION OF R2 AREA IT IS 200 AMP SERVICE.
- NO TREES PLANTED WITHIN 3.5m OF STREETLIGHT POLES AND 1.0m OF ELECTRICAL FACILITIES INCLUDING CABLE.

FACILITY MAP
 SCALE: 1:1000