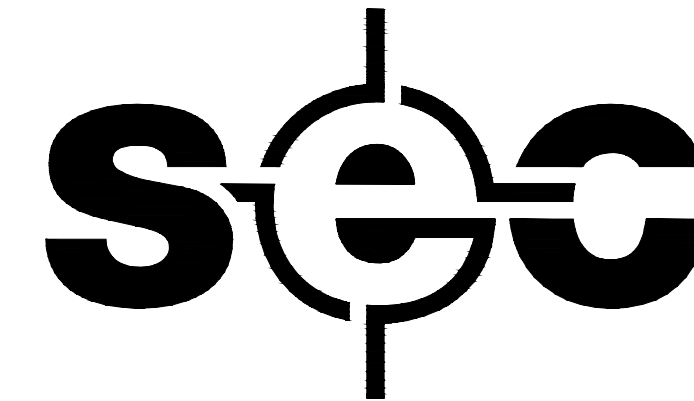


TOWN OF WAINWRIGHT

KRAMER SUBDIVISION STAGE 1

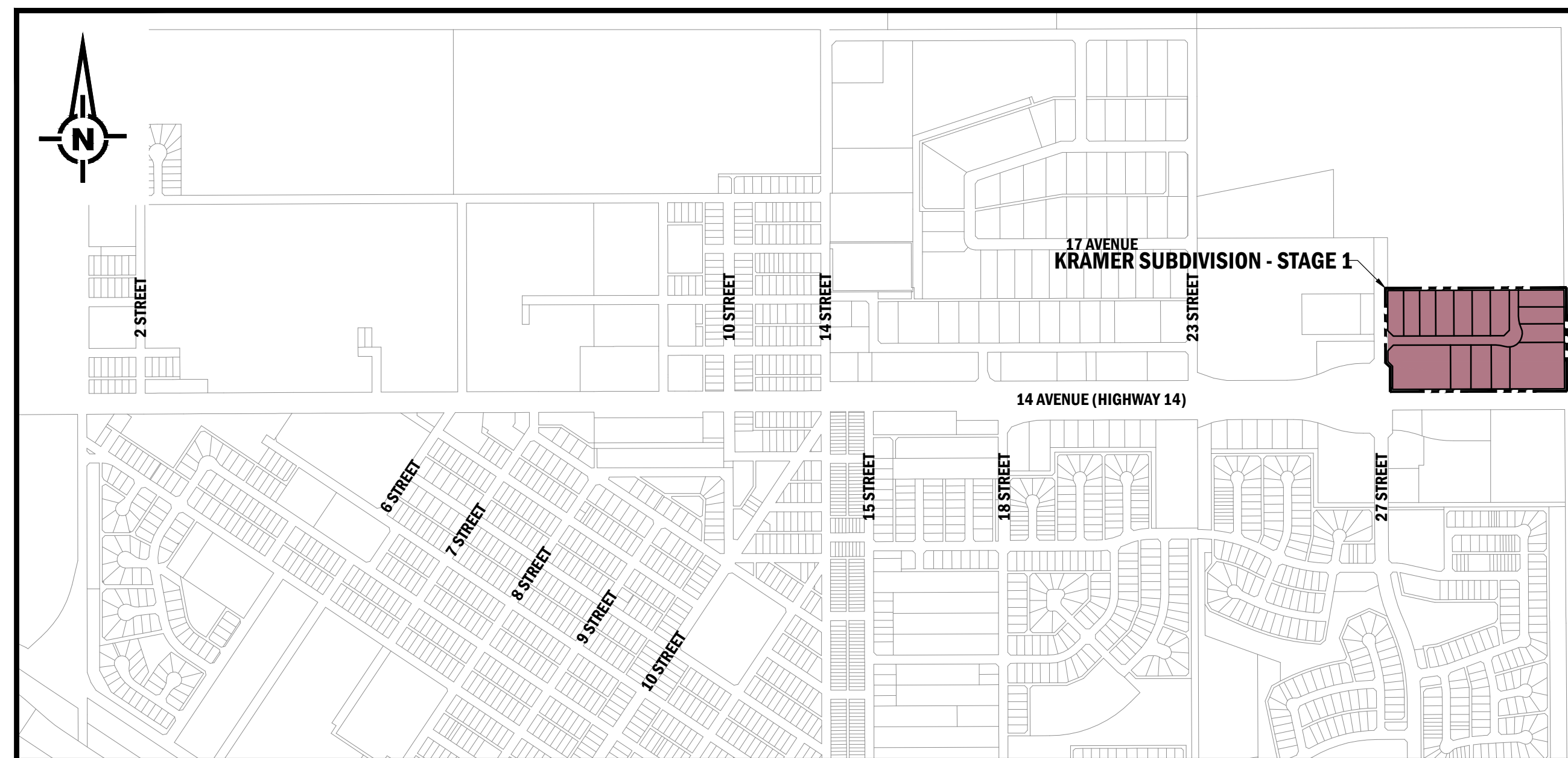


Town of Wainwright
"The Buffalo Capital of Canada!"



LIST OF DRAWINGS

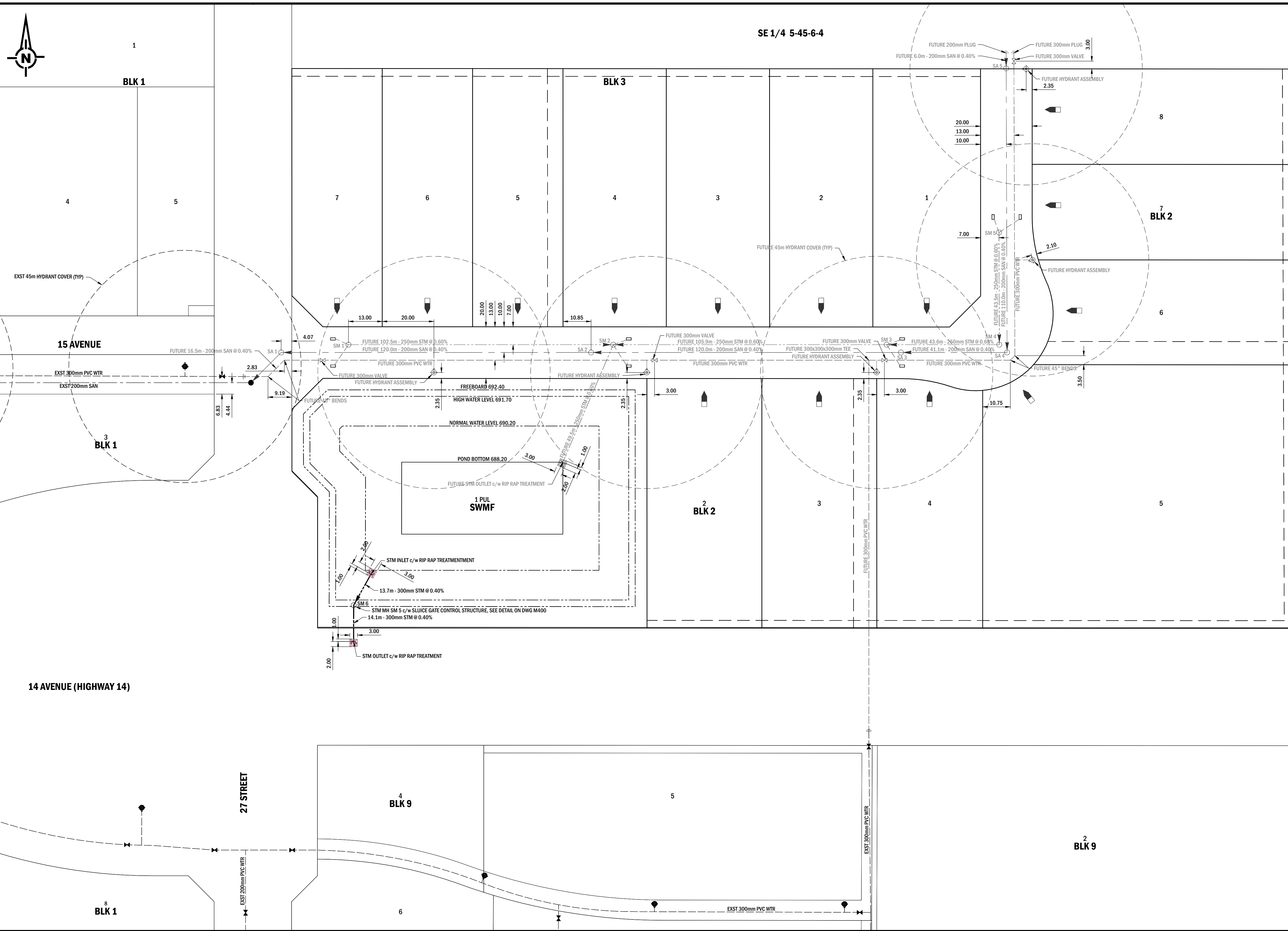
121-13006-M000	COVER SHEET AND LOCATION PLAN
OVERALL PLANS	
121-13006-M100	UNDERGROUND UTILITIES - FOR INFORMATION ONLY
121-13006-M101	ORIGINAL TOPOGRAPHY & INDEX PLAN
121-13006-M102	LOT GRADING
PLAN / PROFILES	
121-13006-M200	15 AVENUE - STA 0+000 TO 0+325
121-13006-M201	30 STREET - STA 0+000 TO 0+200
SECTIONS AND DETAIL PLANS	
121-13006-M300	POND SECTIONS
121-13006-M400	DETAILS



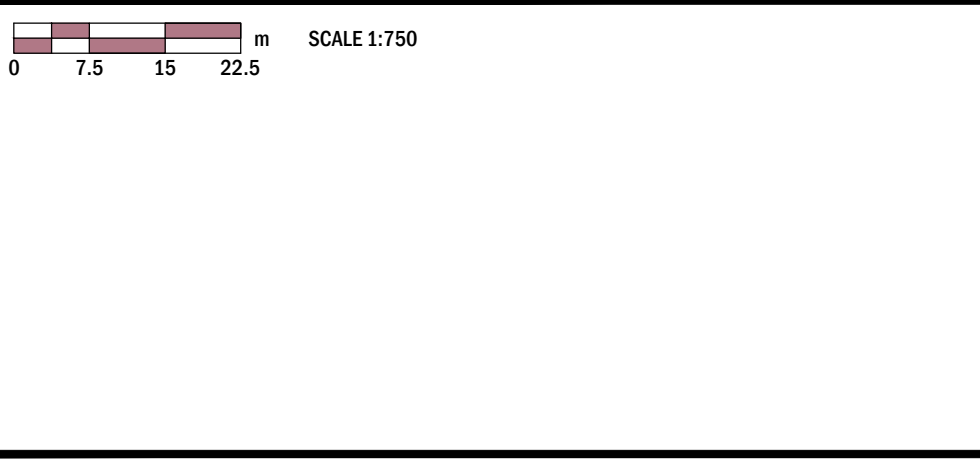
LOCATION PLAN
SCALE 1:10000

SEPTEMBER 5, 2013
ISSUE FOR BID
121-13006

FILENAME: 121-13006-M100.DWG SOURCE: W:\0121-TOWN OF WAINWRIGHT\121-13006-KRAMER SUBDIVISION\3.0 DESIGN PROCESS\3.3 ACAD\3.3.3 WORKING DRAWINGS
 SAVED BY: KJANIELS PLOT DATE: September 6, 2013



- GENERAL NOTES**
- ALL DIMENSIONS ARE IN METRES UNLESS NOTED OTHERWISE.
 - ALL EXISTING UTILITY LOCATIONS MAY NOT BE SHOWN. ANY EXISTING UTILITIES THAT ARE SHOWN ARE APPROXIMATE. THE CONTRACTOR IS RESPONSIBLE FOR THE VERIFICATION OF LOCATION AND PROTECTION OF ALL EXISTING UTILITIES, WHETHER SHOWN ON THE DRAWINGS OR NOT.
 - CONTACT ALBERTA ONE CALL AT 1-800-242-3447 PRIOR TO ANY CONSTRUCTION.
 - CONTACT DIG SHAW AT 1-866-344-7429 PRIOR TO ANY CONSTRUCTION.
 - CONTACT THE TOWN OF WAINWRIGHT PUBLIC WORKS DEPARTMENT PRIOR TO ANY EXPOSURE AND CONNECTION TO EXISTING INFRASTRUCTURE.
 - THE CONTRACTOR IS RESPONSIBLE TO NOTIFY ANY PARTY REQUIRING A CROSSING AGREEMENT AND TO RESPECT ALL CROSSING AGREEMENT REQUIREMENTS.
 - THE CONTRACTOR IS RESPONSIBLE FOR PROVIDING ADEQUATE NOTICE TO ANY EFFECTED PRIVATE OR PUBLIC SECTOR REGARDING MUNICIPAL SERVICE AND/OR ACCESS DISRUPTIONS.
 - ALL DISTURBED AREAS ARE TO BE REPAIRED, REPLACED AND/OR LANDSCAPED TO NEW CONDITION. CONCRETE OR ASPHALT REPAIRS SHALL BE CUT AND SQUARED TO THE SATISFACTION OF THE RESIDENT ENGINEER. LANDSCAPED REPAIRS ARE TO BE TOPSOILED AND SEED TO A MINIMUM DEPTH OF 75mm AND MAINTAIN POSITIVE DRAINAGE.
- LEGEND**
- | | PROPOSED | EXISTING |
|-------------------------------|----------|----------|
| SANITARY SEWER (SAN) | | |
| WATER DISTRIBUTION MAIN (WTR) | | |
| MANHOLE (MH) | | |
| WATER VALVE (VAL) | | |
| FIRE HYDRANT (HYD) | | |
| PLUG | | |

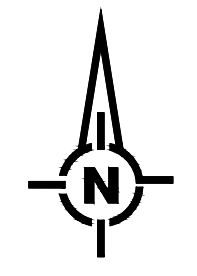


PERMIT	ENGINEER
--------	----------

REV	Y	M	D	REVISION DESCRIPTION	DRN	SUPV	DES	CHK	ENG	APP
A	13	09	05	ISSUE FOR BID						

TOWN OF WAINWRIGHT
KRAMER SUBDIVISION
 STAGE 1
 OVERALL PLAN
 UNDERGROUND UTILITIES - FOR INFORMATION ONLY
 DRAWING
121-13006-M100

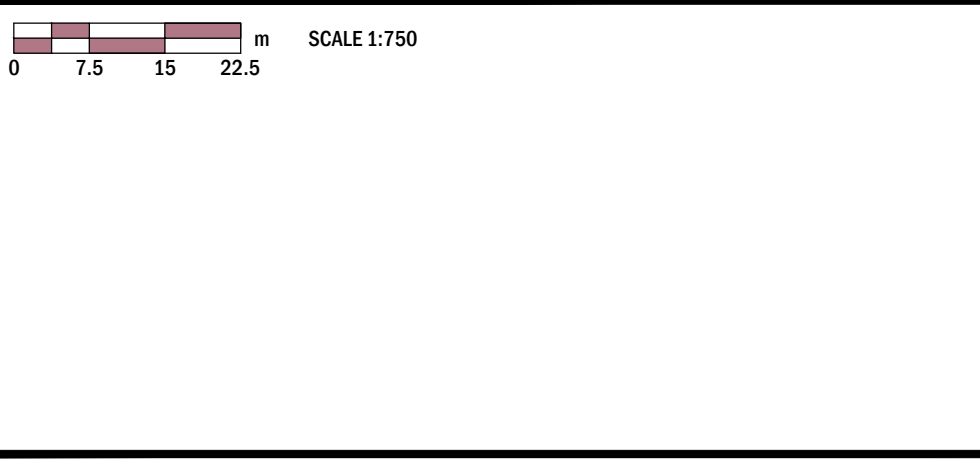
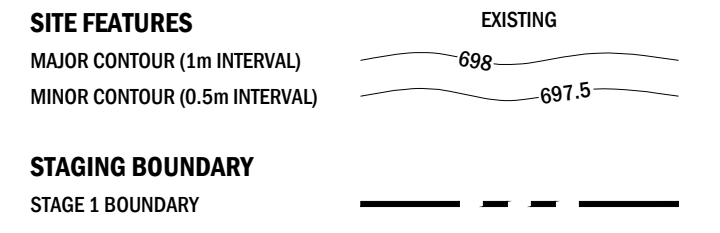
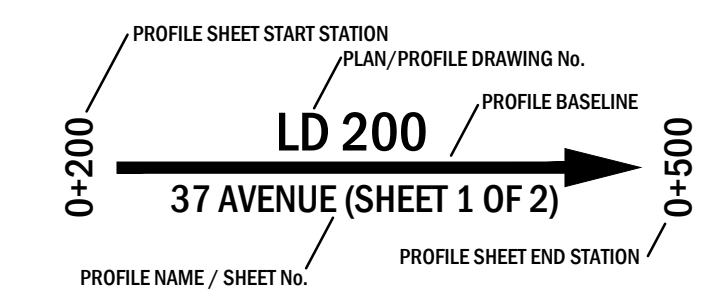
FILENAME: 121-13006-M101.DWG SOURCE: W:\0121-TOWN OF WAINWRIGHT\121-13006-KRAMER SUBDIVISION\3.0 DESIGN PROCESS\3.3 ACAD\3.3.3 WORKING DRAWINGS
 DRAWN BY: KRAMER DATE: September 6, 2013



GENERAL NOTES

1. ALL DIMENSIONS ARE IN METRES UNLESS NOTED OTHERWISE.
2. ALL EXISTING UTILITY LOCATIONS MAY NOT BE SHOWN. ANY EXISTING UTILITIES THAT ARE SHOWN ARE APPROXIMATE. THE CONTRACTOR IS RESPONSIBLE FOR THE VERIFICATION OF LOCATION AND PROTECTION OF ALL EXISTING UTILITIES, WHETHER SHOWN ON THE DRAWINGS OR NOT.
3. CONTACT ALBERTA ONE CALL AT 1-800-242-3447 PRIOR TO ANY CONSTRUCTION.
4. CONTACT DIG SHAW AT 1-866-344-7429 PRIOR TO ANY CONSTRUCTION.
5. CONTACT THE TOWN OF WAINWRIGHT PUBLIC WORKS DEPARTMENT PRIOR TO ANY EXPOSURE AND CONNECTION TO EXISTING INFRASTRUCTURE.
6. THE CONTRACTOR IS RESPONSIBLE TO NOTIFY ANY PARTY REQUIRING A CROSSING AGREEMENT AND TO RESPECT ALL CROSSING AGREEMENT REQUIREMENTS.
7. THE CONTRACTOR IS RESPONSIBLE FOR PROVIDING ADEQUATE NOTICE TO ANY EFFECTED PRIVATE OR PUBLIC SECTOR REGARDING MUNICIPAL SERVICE AND/OR ACCESS DISRUPTIONS.
8. ALL DISTURBED AREAS ARE TO BE REPAIRED, REPLACED AND/OR LANDSCAPED TO NEW CONDITION. CONCRETE OR ASPHALT REPAIRS SHALL BE CUT AND SQUARED TO THE SATISFACTION OF THE RESIDENT ENGINEER. LANDSCAPED REPAIRS ARE TO BE TOPSOILED AND SEEDED TO A MINIMUM DEPTH OF 75mm AND MAINTAIN POSITIVE DRAINAGE.

LEGEND



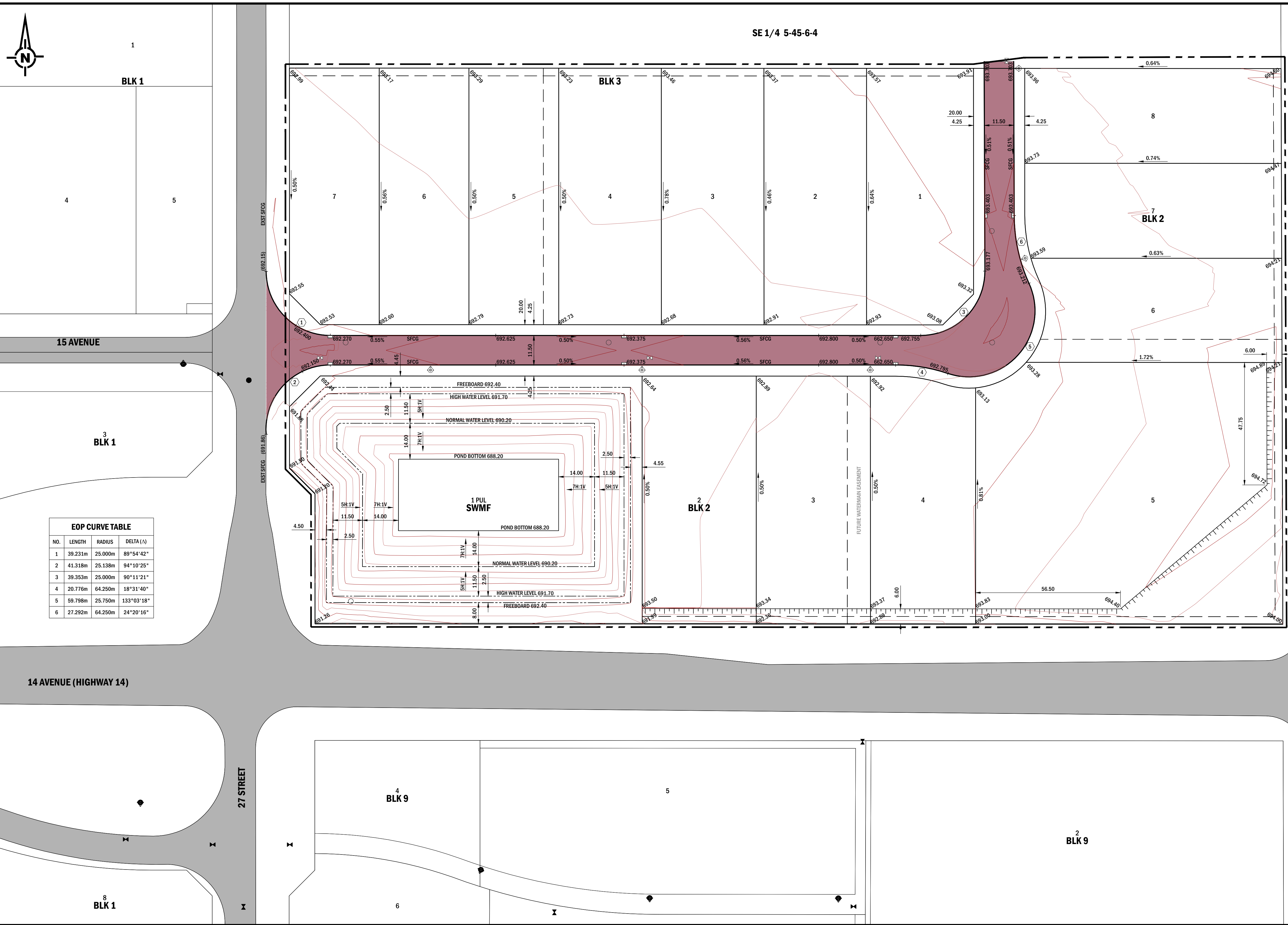
PERMIT	ENGINEER
--------	----------

REV	Y	M	D	ISSUE FOR BID	DRN	SUPV	DES	CHK	ENG	APP
A	13	09	05	ISSUE FOR BID						
				REVISION DESCRIPTION						

SELECT ENGINEERING CONSULTANTS LTD.
 201, 17220 STONY PLAIN ROAD
 EDMONTON AB T5S 1K6 CANADA
 TEL 780 651 5777 FAX 780 651 5757
 www.selecteng.ca

TOWN OF WAINWRIGHT
KRAMER SUBDIVISION
 STAGE 1
 OVERALL PLAN
 ORIGINAL TOPOGRAPHY & INDEX PLAN
 DRAWING
121-13006-M101

FILENAME: 121-13006-M102.DWG SOURCE: W:\0121-TOWN OF WAINWRIGHT\121-13006-KRAMER SUBDIVISION\3.0 DESIGN PROCESS\3.3 ACAD\3.3 WORKING DRAWINGS
 SAVED BY: KDMIELS PLOT DATE: September 6, 2013



SE 1/4 5-45-6-4

- GENERAL NOTES**
- ALL DIMENSIONS ARE IN METRES UNLESS NOTED OTHERWISE.
 - ALL EXISTING UTILITY LOCATIONS MAY NOT BE SHOWN. ANY EXISTING UTILITIES THAT ARE SHOWN ARE APPROXIMATE. THE CONTRACTOR IS RESPONSIBLE FOR THE VERIFICATION OF LOCATION AND PROTECTION OF ALL EXISTING UTILITIES, WHETHER SHOWN ON THE DRAWINGS OR NOT.
 - CONTACT ALBERTA ONE CALL AT 1-800-242-3447 PRIOR TO ANY CONSTRUCTION.
 - CONTACT DIG SHAW AT 1-866-344-7429 PRIOR TO ANY CONSTRUCTION.
 - CONTACT THE TOWN OF WAINWRIGHT PUBLIC WORKS DEPARTMENT PRIOR TO ANY EXPOSURE AND CONNECTION TO EXISTING INFRASTRUCTURE.
 - THE CONTRACTOR IS RESPONSIBLE TO NOTIFY ANY PARTY REQUIRING A CROSSING AGREEMENT AND TO RESPECT ALL CROSSING AGREEMENT REQUIREMENTS.
 - THE CONTRACTOR IS RESPONSIBLE FOR PROVIDING ADEQUATE NOTICE TO ANY EFFECTED PRIVATE OR PUBLIC SECTOR REGARDING MUNICIPAL SERVICE AND/OR ACCESS DISRUPTIONS.
 - ALL DISTURBED AREAS ARE TO BE REPAIRED, REPLACED AND/OR LANDSCAPED TO NEW CONDITION. CONCRETE OR ASPHALT REPAIRS SHALL BE CUT AND SQUARED TO THE SATISFACTION OF THE RESIDENT ENGINEER. LANDSCAPED REPAIRS ARE TO BE TOPSOILED AND SEED TO A MINIMUM DEPTH OF 75mm AND MAINTAIN POSITIVE DRAINAGE.

LEGEND

SITE GRADING	PROPOSED	EXISTING	FUTURE
LOT CORNER GRADE	695.25	(695.25)	(695.25)
2-3% OVERALL GRADE (BACK TO FRONT)	A	A	A
3-6% OVERALL GRADE (BACK TO FRONT)	B	B	B
6%+ OVERALL GRADE (BACK TO FRONT)	C	C	C
SPLIT LOT DRAINAGE	D	D	D
TRANSITIONAL LOT DRAINAGE	TR	TR	TR
LOT SERVICE SANITARY PIPE INVERT	(695.25)	(695.25)	(695.25)
PONDING AREA	(Symbol)	(Symbol)	(Symbol)
SWALE DRAINAGE ROUTE	(Symbol)	(Symbol)	(Symbol)
MAJOR DRAINAGE ROUTE	(Symbol)	(Symbol)	(Symbol)
FACE OF CURB (SFCG/RFCG)	(Symbol)	(Symbol)	(Symbol)

STAGING BOUNDARY

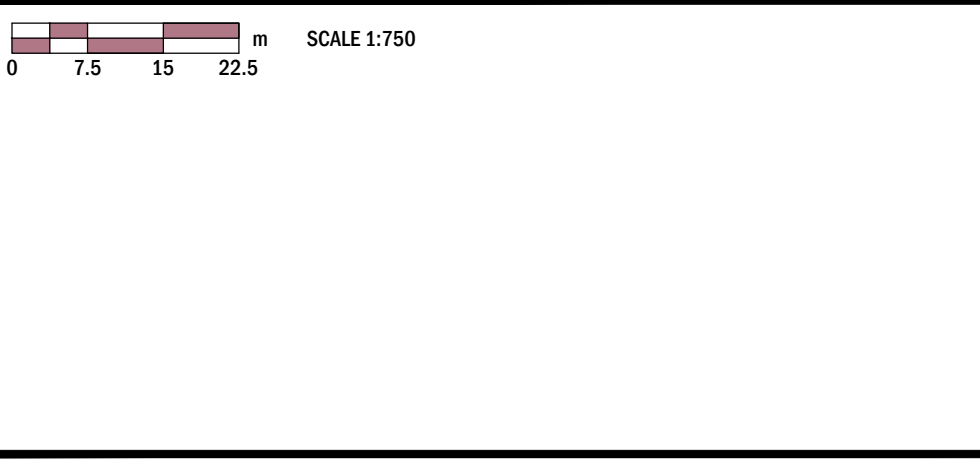
STAGE 1 BOUNDARY (Symbol)

UNDERGROUND FEATURES

FEATURE	FUTURE	EXISTING
MANHOLE (MH)	(Symbol)	(Symbol)
CATCHBASIN AND LEAD (CB)	(Symbol)	(Symbol)
WATER VALVE (VAL)	(Symbol)	(Symbol)
FIRE HYDRANT (HYD)	(Symbol)	(Symbol)

EOP CURVE TABLE

NO.	LENGTH	RADIUS	DELTA (A)
1	39.231m	25.000m	89°54'42"
2	41.318m	25.138m	94°10'25"
3	39.353m	25.000m	90°11'21"
4	20.776m	64.250m	18°31'40"
5	59.798m	25.750m	133°03'18"
6	27.292m	64.250m	24°20'16"



PERMIT	ENGINEER

REV	Y	M	D	ISSUE FOR BID	DRN	SUPV	DES	CHK	ENG	APP
A	13	09	05							

SELECT ENGINEERING CONSULTANTS LTD.
 201, 17220 STONY PLAIN ROAD
 EDMONTON AB T5S 1K6 CANADA
 TEL 780 651 5777 FAX 780 651 5757
 www.selecteng.ca

**TOWN OF WAINWRIGHT
KRAMER SUBDIVISION**

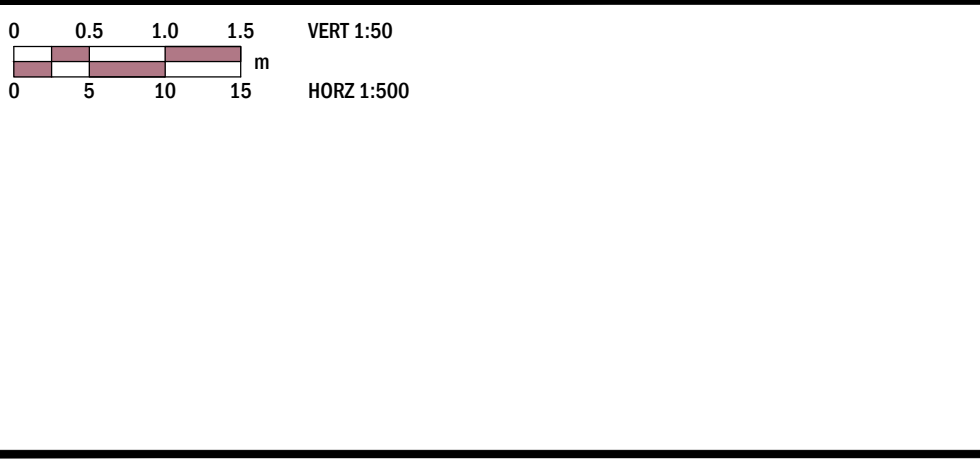
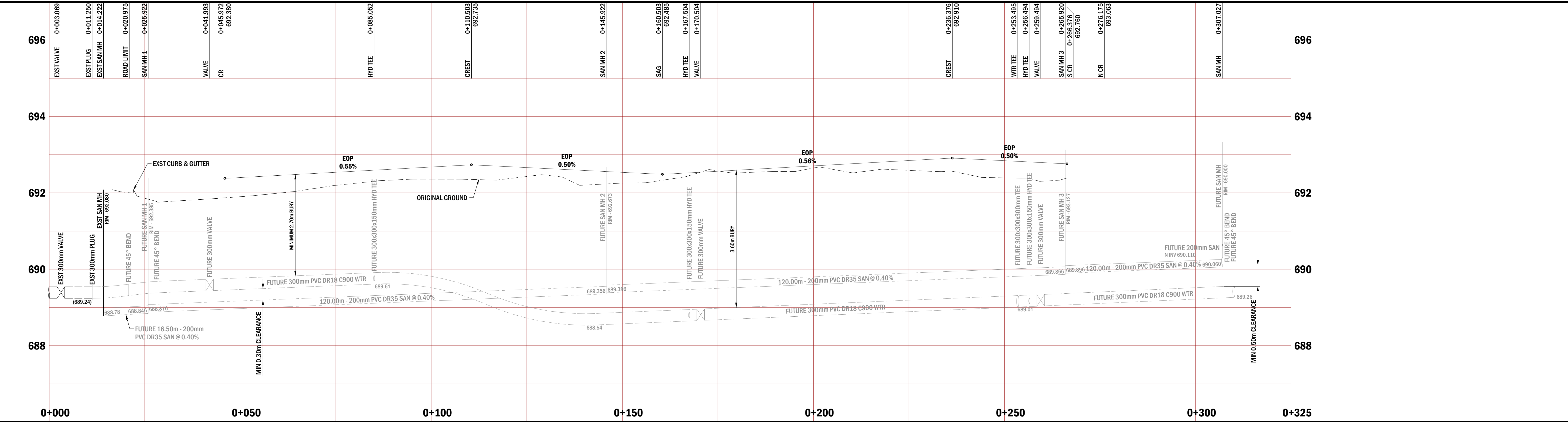
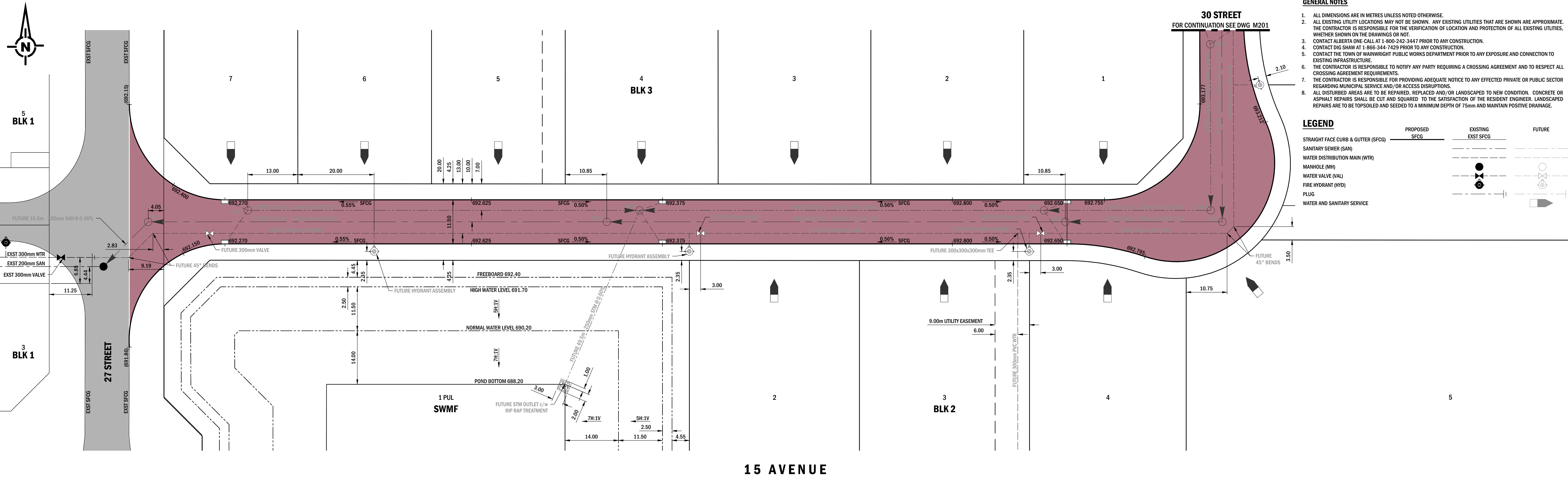
OVERALL PLAN
LOT GRADING

121-13006-M102

SW 4-45-6-4

NW 33-44-6-4

© THIS DOCUMENT IS COPYRIGHT - NO REPRODUCTION IN WHOLE OR IN PART IS PERMITTED WITHOUT THE WRITTEN PERMISSION OF SELECT ENGINEERING CONSULTANTS LTD. - AN ELECTRONIC DATA LICENSE IS REQUIRED FOR DIGITAL VERSION OF THIS DOCUMENT.



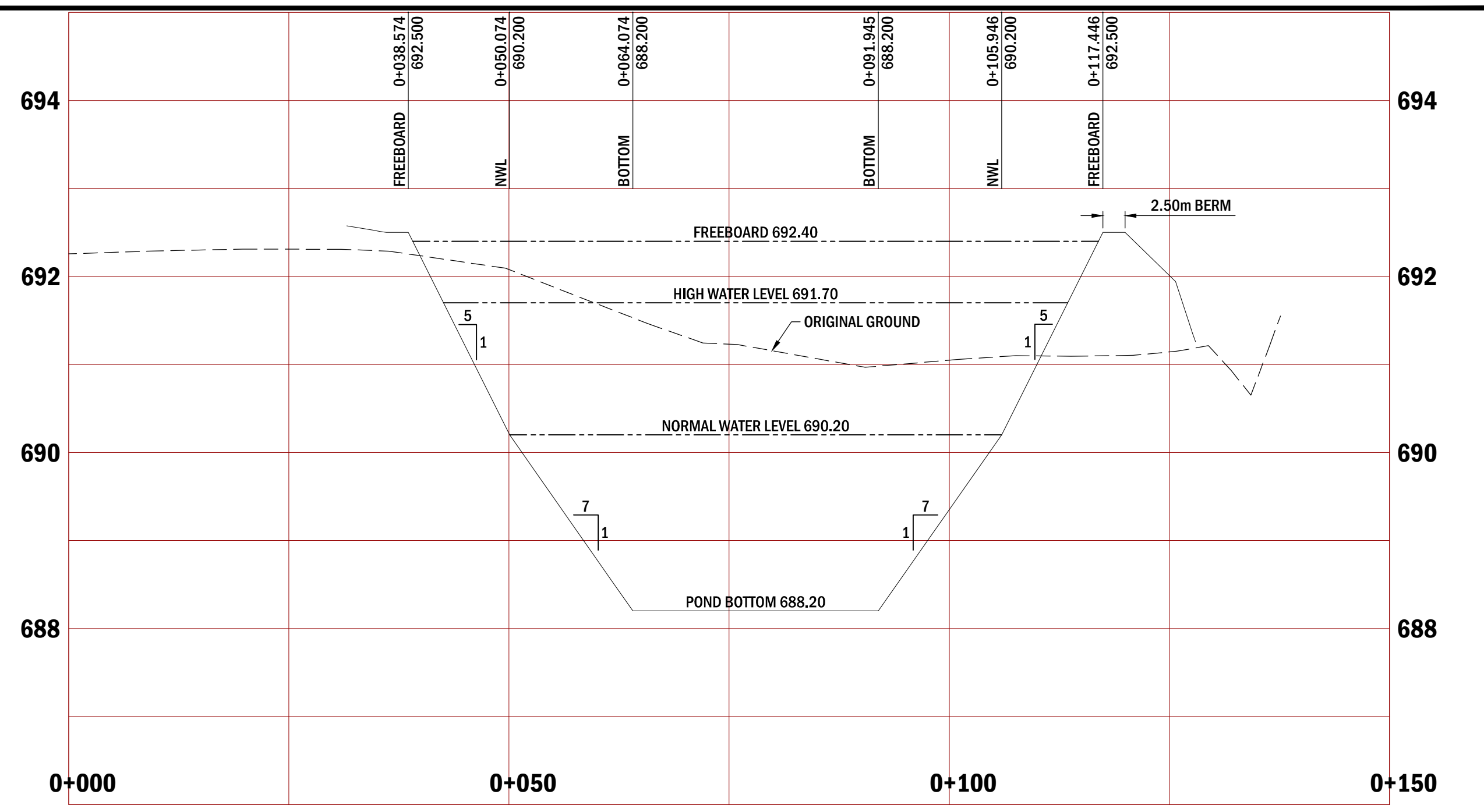
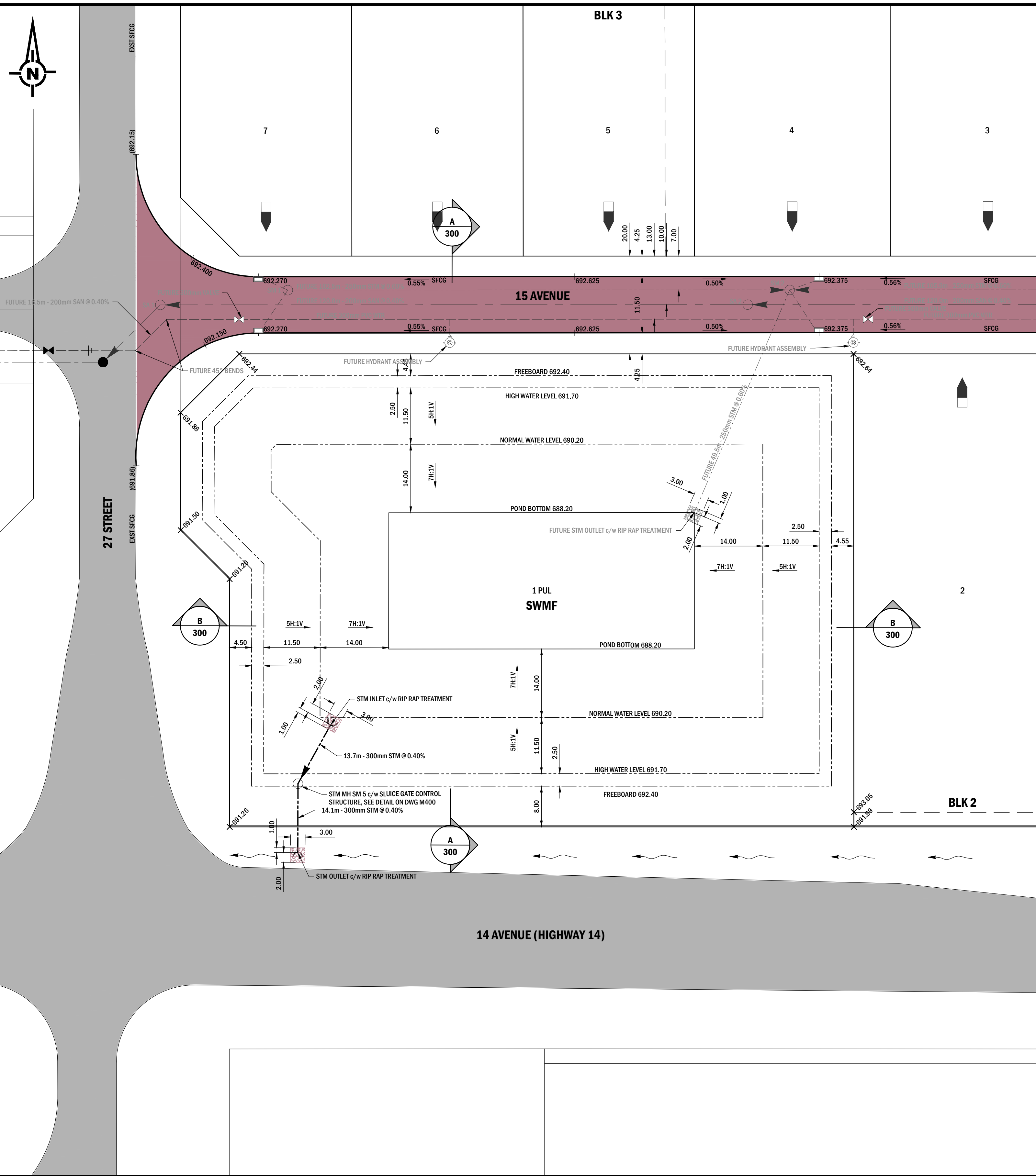
PERMIT	ENGINEER
--------	----------

REV	Y	M	D	REVISION DESCRIPTION	DRN	SUPV	DES	CHK	ENG	APP
A	13	09	05	ISSUE FOR BID						

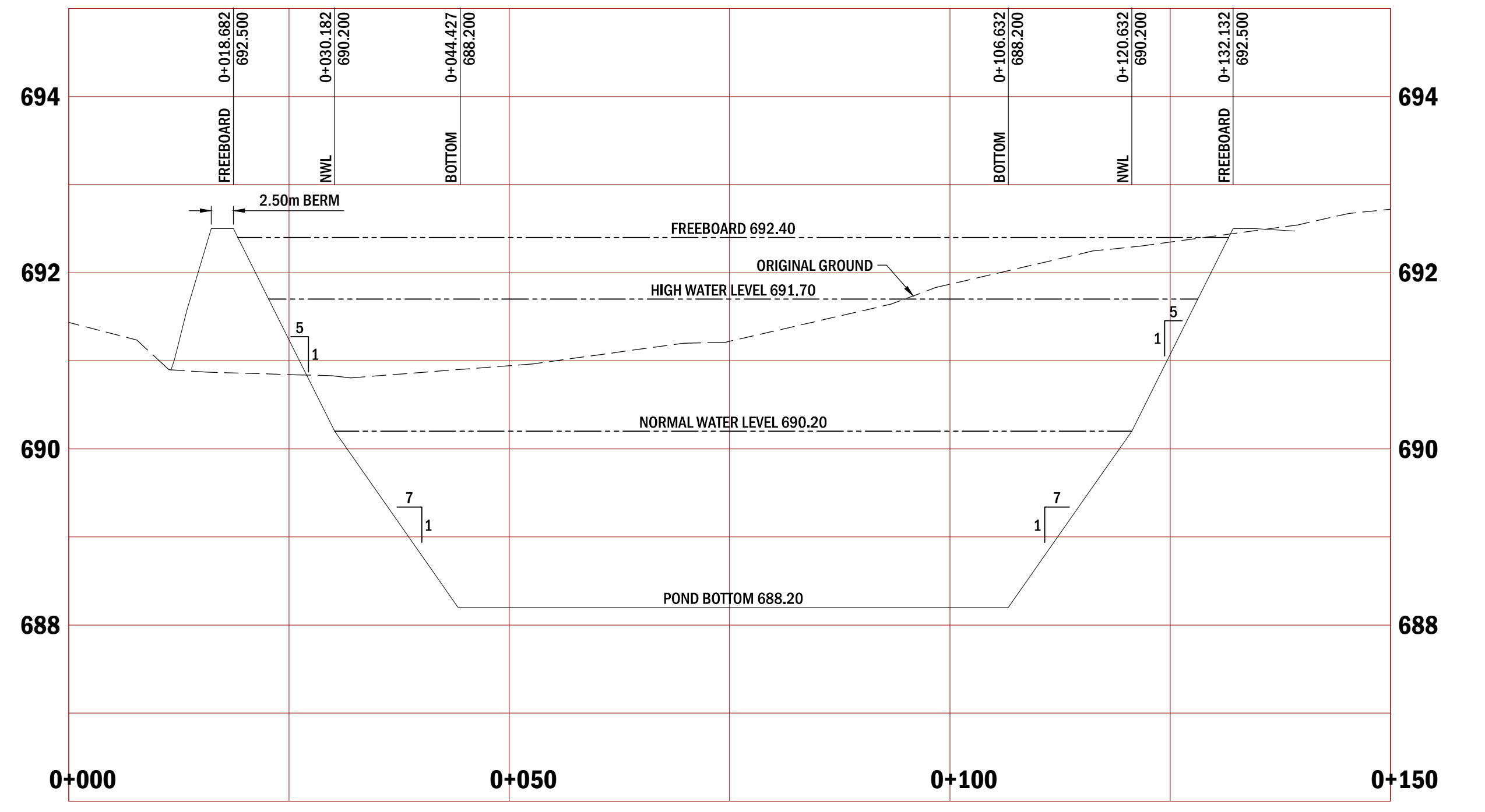
SEC
 SELECT ENGINEERING CONSULTANTS LTD.
 201, 17220 STONY PLAIN ROAD
 EDMONTON AB T5S 1K6 CANADA
 TEL 780 651 5777 FAX 780 651 5757
 www.selecteng.ca

TOWN OF WAINWRIGHT
KRAMER SUBDIVISION
 STAGE 1
 PLAN / PROFILE
 15 AVENUE - STA 0+000 TO 0+325
 DRAWING
121-13006-M200

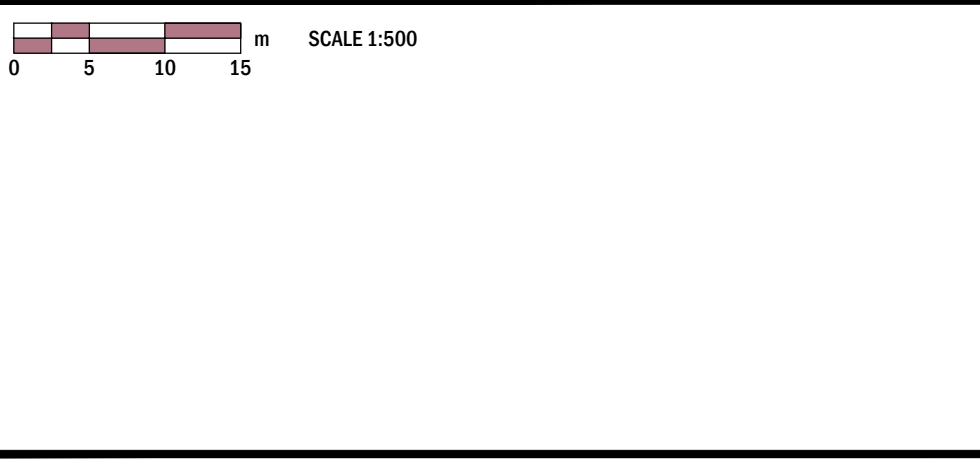
FILENAME: 121-13006-M300.DWG SOURCE: W:\0121-TOWN OF WAINWRIGHT\121-13006-KRAMER SUBDIVISION\3.0 DESIGN PROCESS\3.3 ACAD\3.3.3 WORKING DRAWINGS
 DRAWN BY: DANIELS PLOT DATE: September 6, 2013



SECTION A 300
POND CROSS SECTION A
 VERT 1:50
 HORZ 1:500



SECTION B 300
POND CROSS SECTION B
 VERT 1:50
 HORZ 1:500



PERMIT	ENGINEER
--------	----------

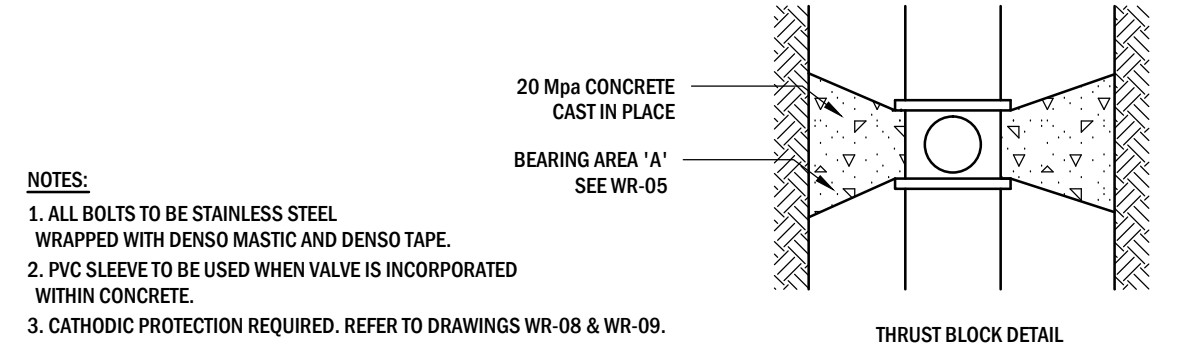
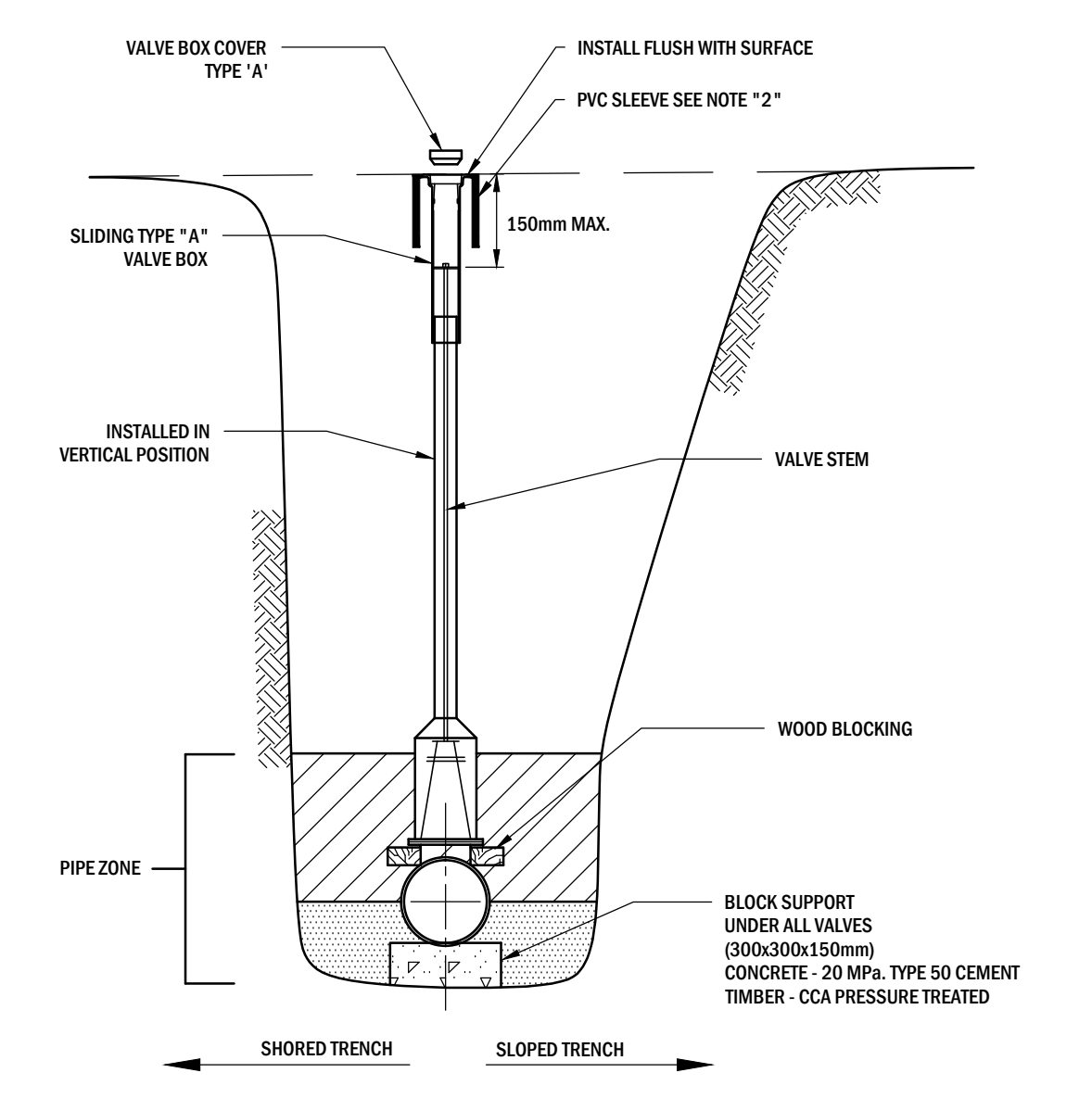
REV	Y	M	D	REVISION DESCRIPTION	DRN	SUPV	DES	CHK	ENG	APP
A	13	09	05	ISSUE FOR BID						



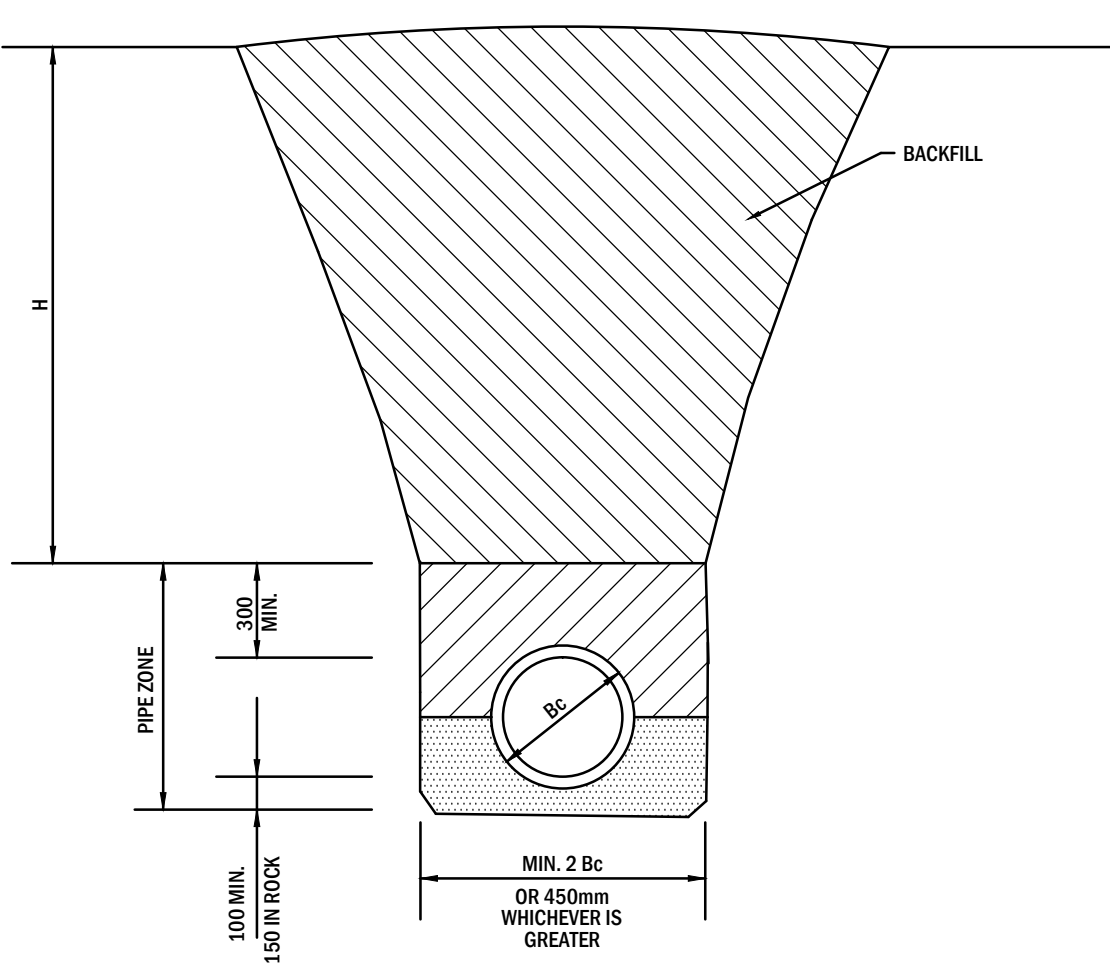
TOWN OF WAINWRIGHT
KRAMER SUBDIVISION
 STAGE 1
POND SECTIONS
 DRAWING
121-13006-M300

© THIS DOCUMENT IS COPYRIGHT - NO REPRODUCTION IN WHOLE OR IN PART IS PERMITTED WITHOUT THE WRITTEN PERMISSION OF SELECT ENGINEERING CONSULTANTS LTD. - AN ELECTRONIC DATA LICENSE IS REQUIRED FOR DIGITAL VERSION OF THIS DOCUMENT.

FILE NAME: 121-13006-M400.DWG SOURCE: W:\0121-TOWN OF WAINWRIGHT\121-13006-KRAMER SUBDIVISION\3.0 DESIGN PROCESS\3.3 ACAD\3.3.3 WORKING DRAWINGS
 DRAWN BY: KRAMIELS PLOT DATE: September 02, 2013

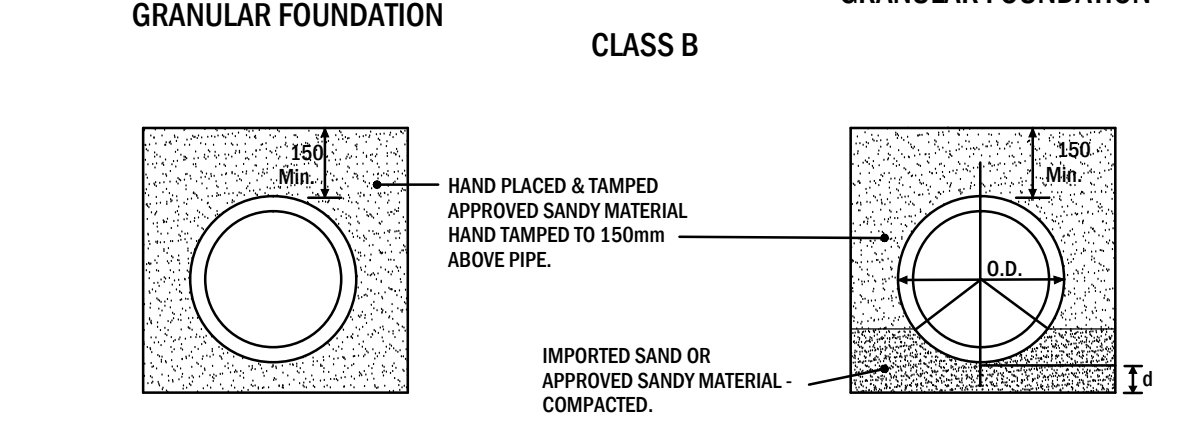
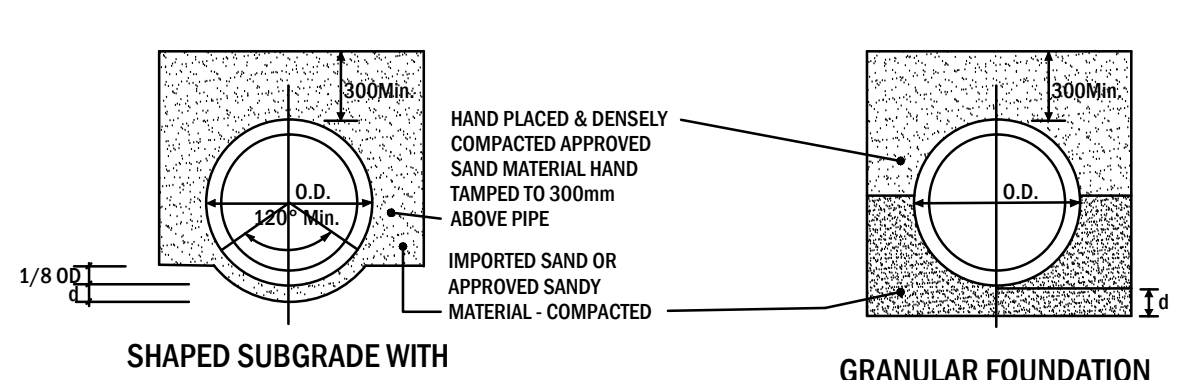
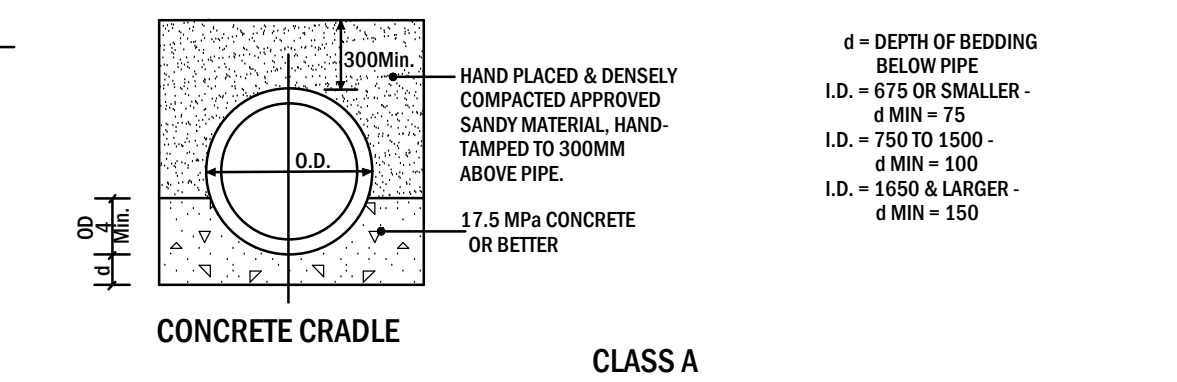


VALVE INSTALLATION DETAIL
N.T.S.



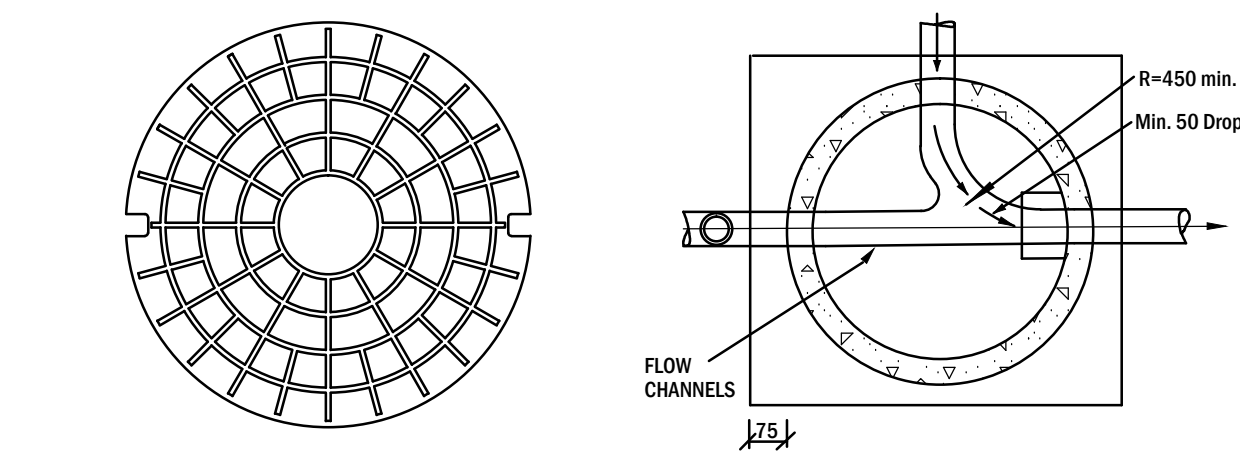
- NOTES:**
1. WHEN CUT BACK SLOPES ARE TO BE USED IN LIEU OF CAGES AND SHORING, THESE SLOPES ARE TO MEET REQUIREMENTS OF LOCAL CODES.
 2. SEE SPECIFICATIONS FOR MINIMUM COVER ABOVE PIPE.
 3. MIN. PIPE ZONE WIDTH IS SPECIFIED TO ALLOW PROPER PIPE ZONE COMPACTION.
 4. Bc = OUTSIDE PIPE DIAMETER.
 5. FOR UNCOMPACTED BACKFILL, CROWN TRENCH BY 0.1 x H.

STANDARD TRENCH DETAIL
N.T.S.

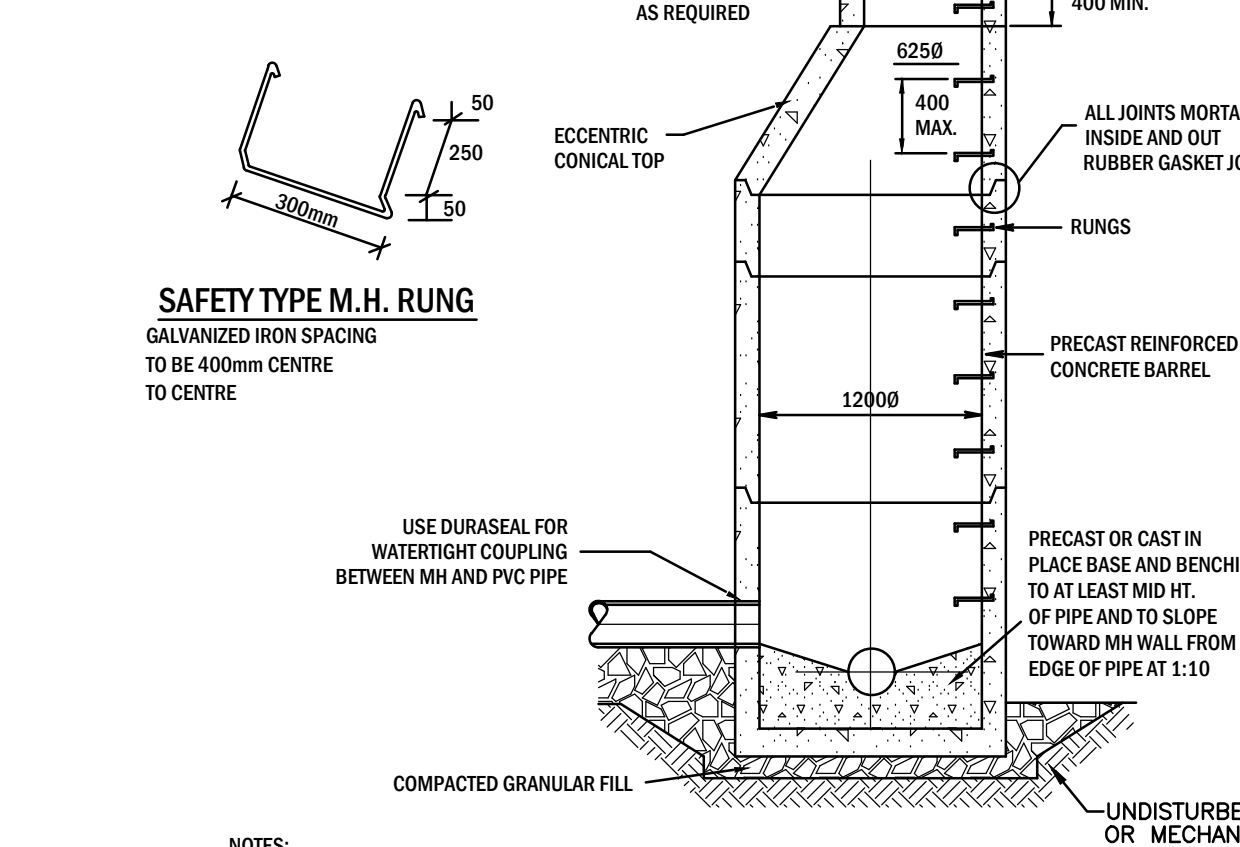


- NOTES:**
- O.D. = OUTSIDE PIPE DIAMETER
 - d = DEPTH OF BEDDING BELOW PIPE

PIPE BEDDING TYPES
N.T.S.

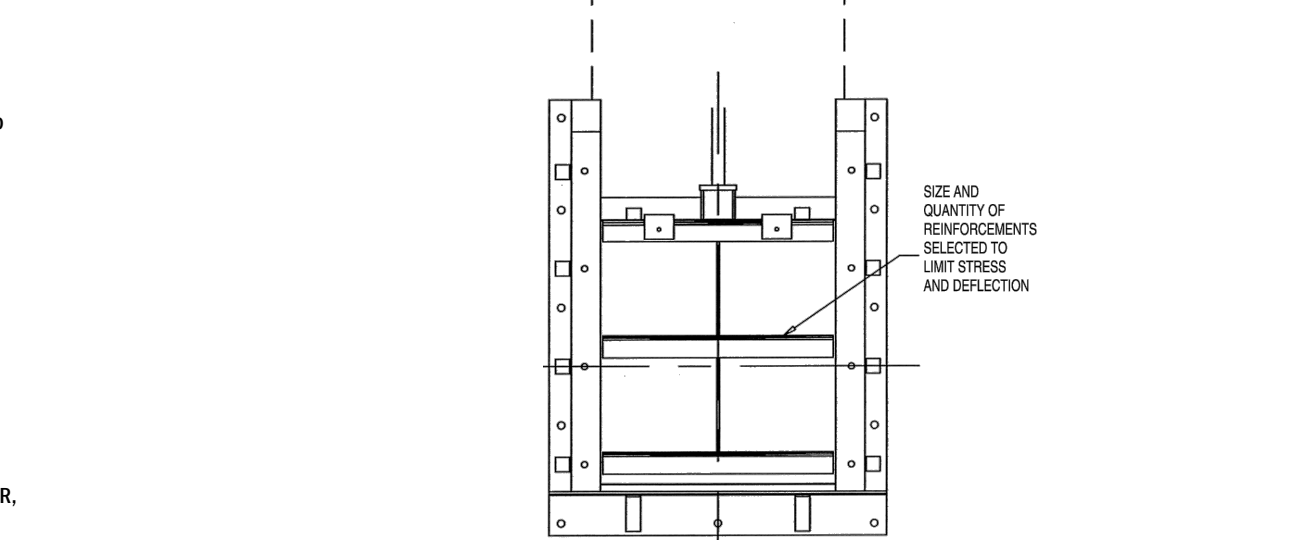


STANDARD FRAME & COVER
Use Norwood N.F.80 or Trojan T.F.80 on all manholes in roadways or walks (SEE DRAWING SY-04)

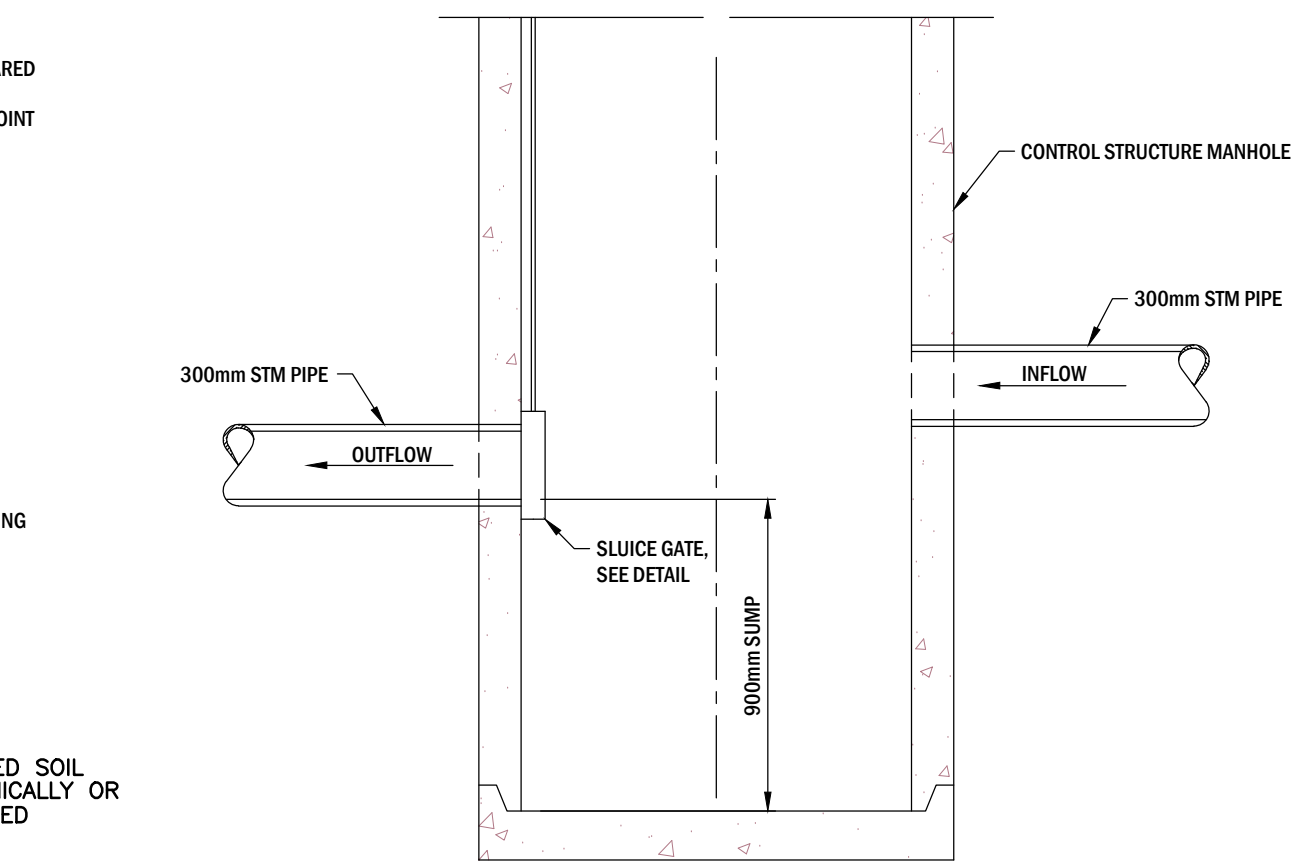


- NOTES:**
1. MANHOLES OF DEPTH GREATER THAN 7m REQUIRE AN ALUMINUM SAFETY PLATFORM.

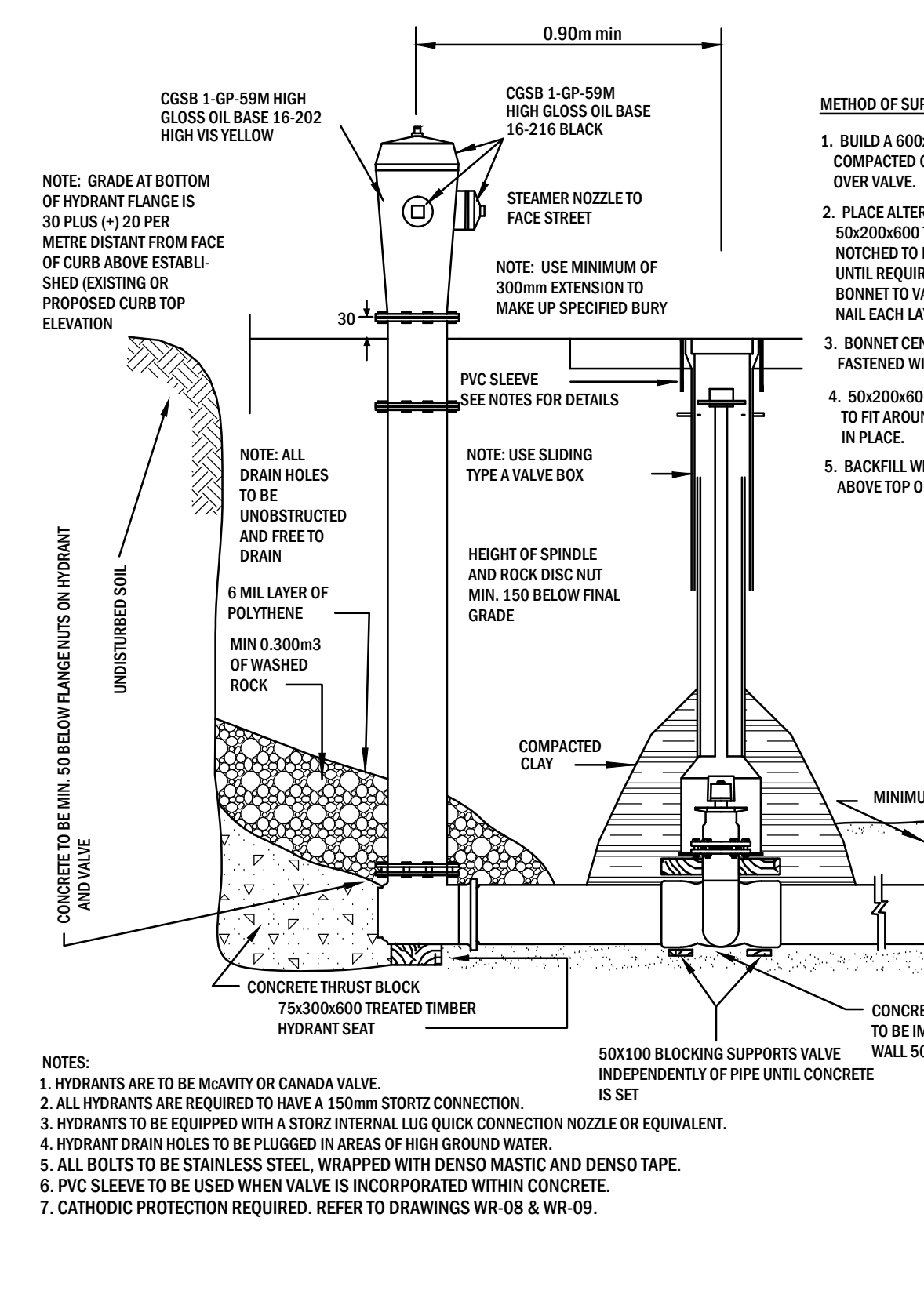
STANDARD MANHOLE DETAIL
N.T.S.



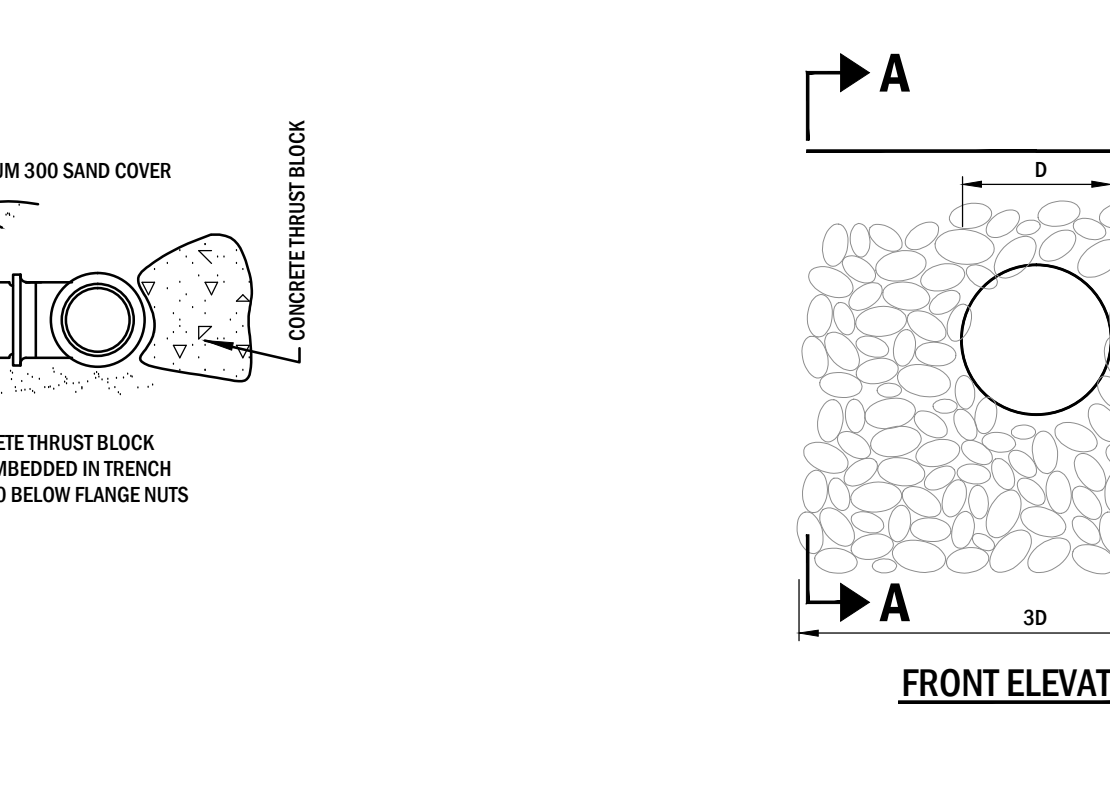
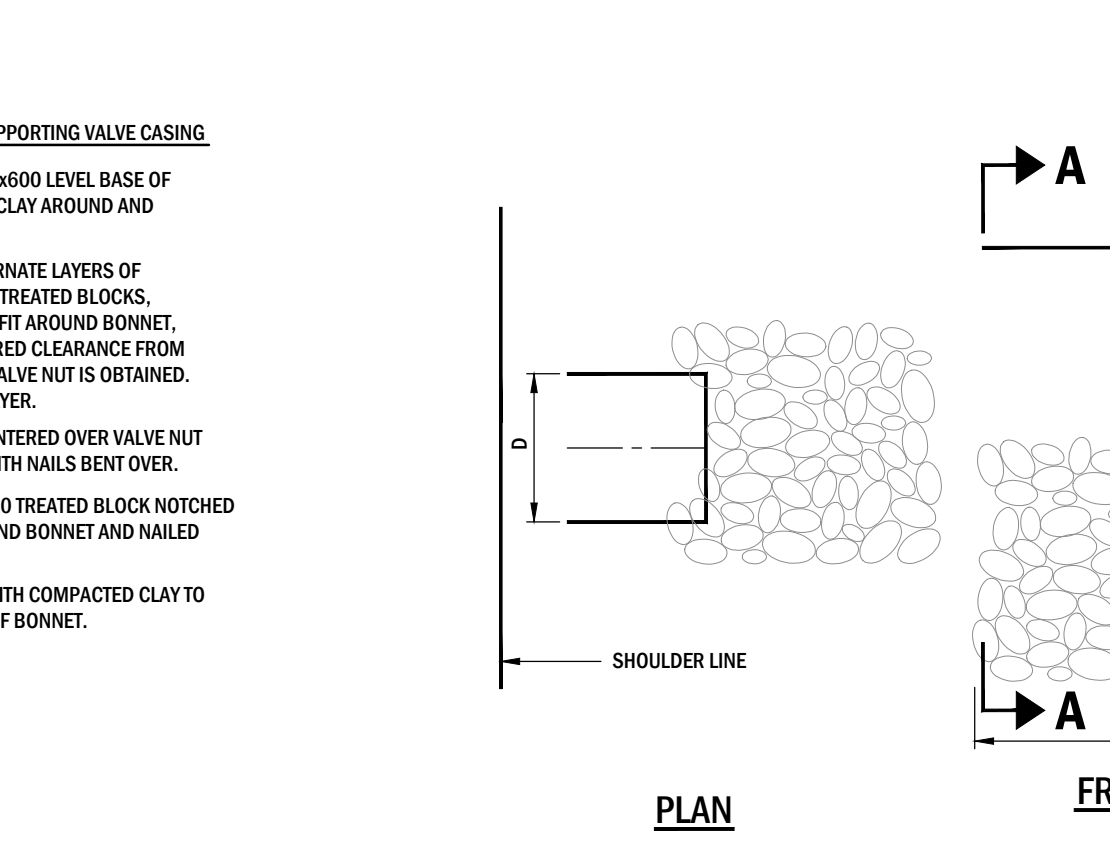
SLUICE GATE DETAIL
N.T.S.



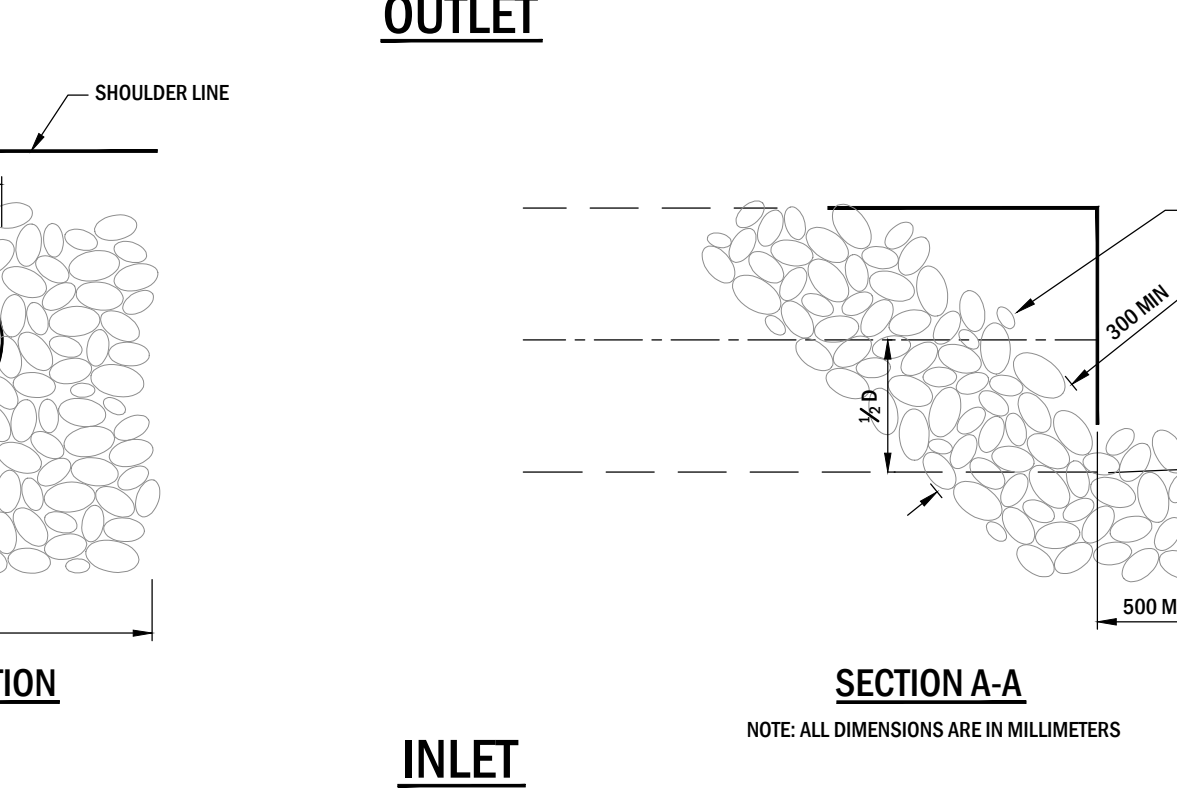
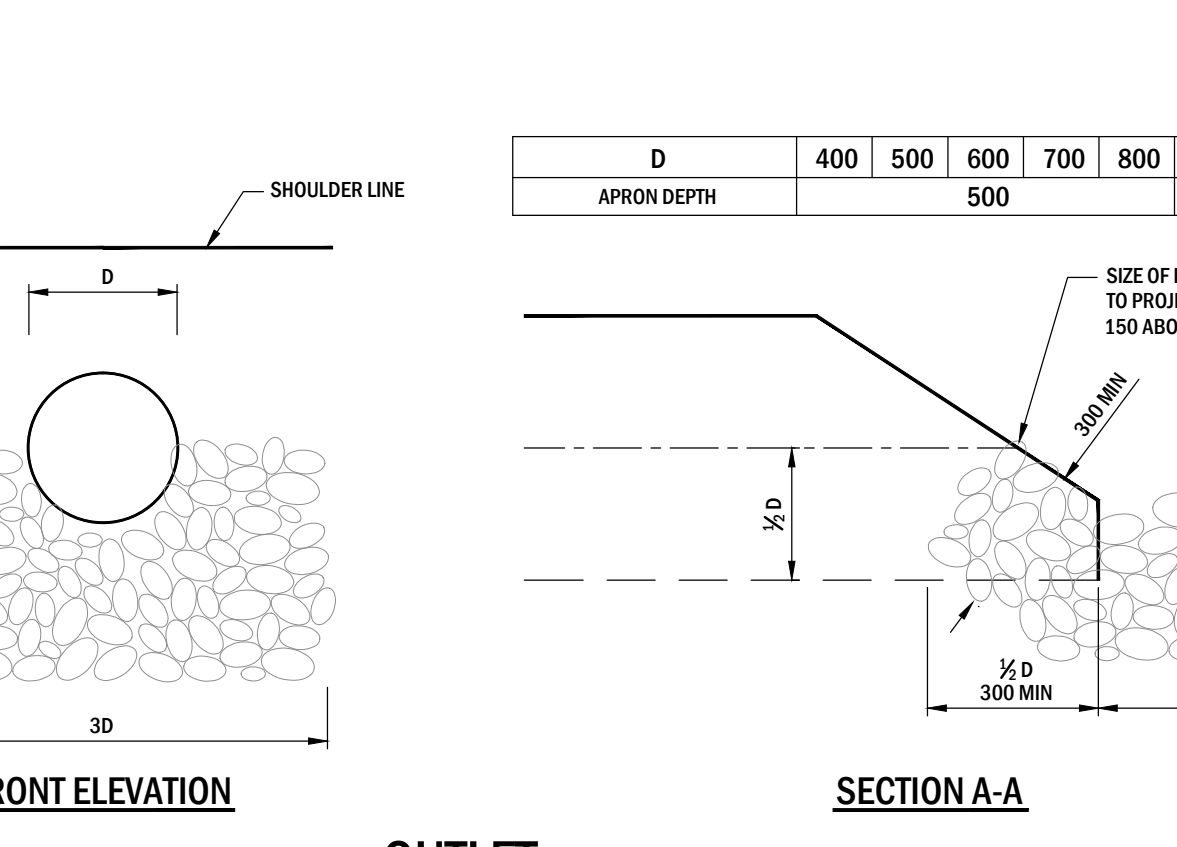
SLUICE GATE MANHOLE DETAIL
N.T.S.



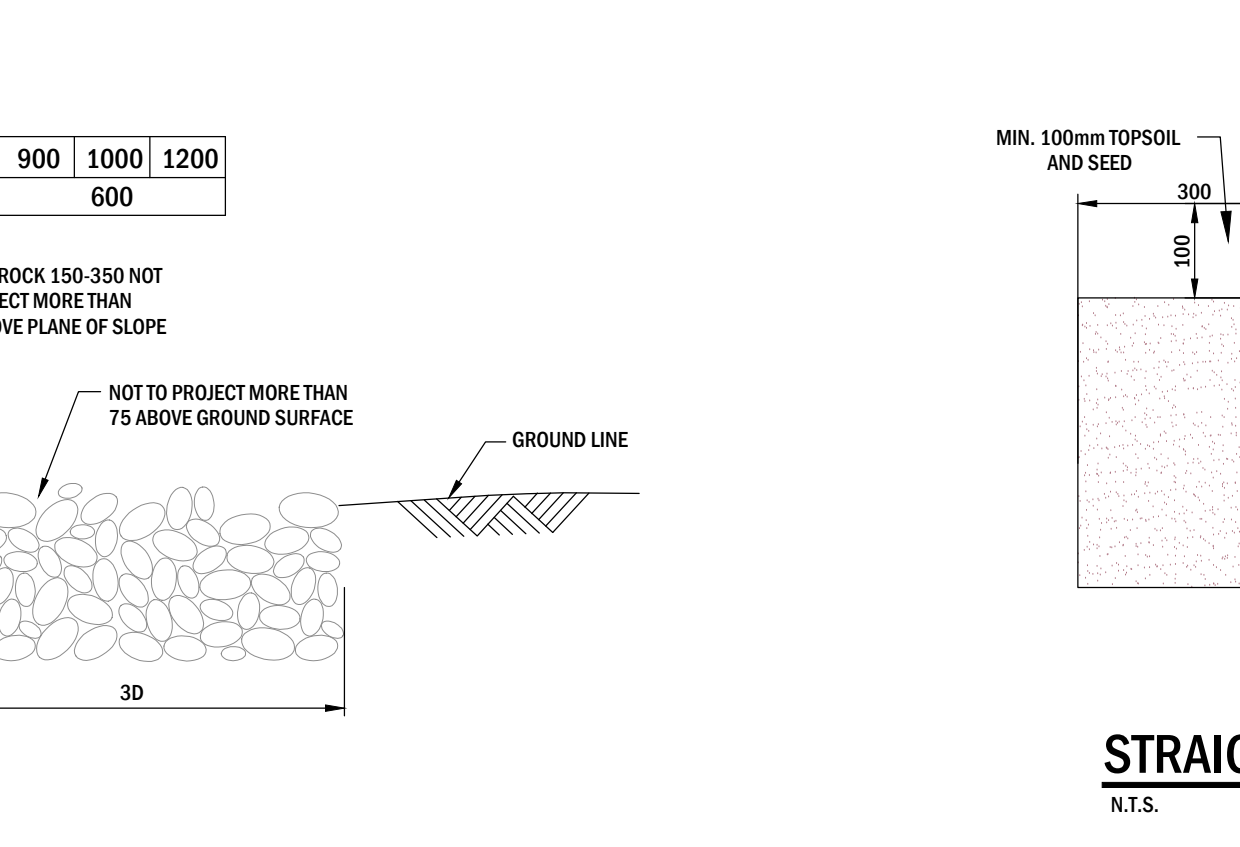
HYDRANT ASSEMBLY DETAIL
N.T.S.



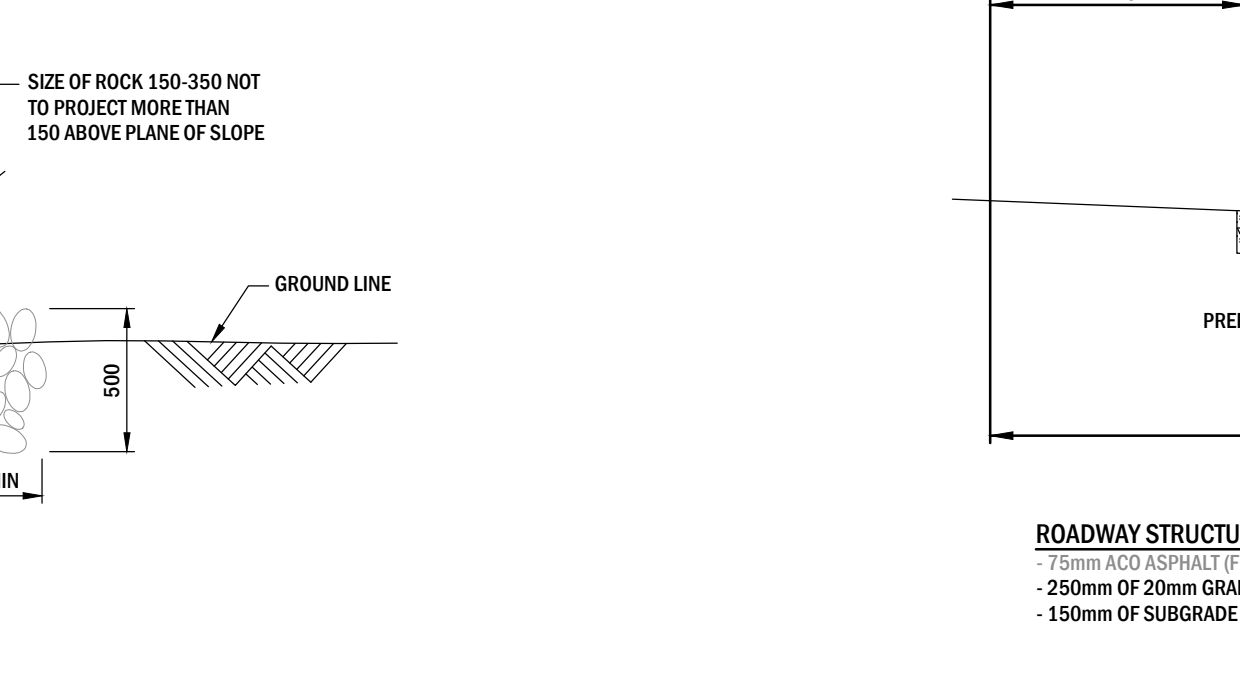
OUTLET CULVERT RIP RAP DETAIL
N.T.S.



INLET CULVERT RIP RAP DETAIL
N.T.S.



STRAIGHT FACE CURB AND 250mm GUTTER
N.T.S.



TYPICAL ROAD SECTION
N.T.S.

PERMIT	ENGINEER
--------	----------

REV	Y	M	D	ISSUE FOR BID	
A	13	09	05	ISSUE FOR BID	
DRN	SUPV	DES	CHK	ENG	APP

DRN	SUPV	DES	CHK	ENG	APP
-----	------	-----	-----	-----	-----

SEC

SELECT ENGINEERING CONSULTANTS LTD.
201, 17220 STONY PLAIN ROAD
EDMONTON AB T5S 1K6 CANADA
TEL 780 651 5777 FAX 780 651 5757
www.selecteng.ca

**TOWN OF WAINWRIGHT
KRAMER SUBDIVISION
STAGE 1**

DETAILS

DRIVING
121-13006-M400