

March 24, 2017

File No.: 121-15017-1.0

Mr. Ed Chow, C.A.O.  
Town of Wainwright  
1018 – 2<sup>nd</sup> Avenue  
Wainwright AB T9W 1R1

Dear Ed

**Re: 14/41 Common Subdivision – Stage 2 Grading – Pond EPEA Registration Drawings**

As requested by Banner Environmental Engineering Consultants on behalf to the Town of Wainwright, we are providing the attached drawings issued for EPEA Registration of the Stormwater Management Facility to be constructed in the 14/41 Common – Stage 2 Subdivision development. The following information has been included:

- Overall Plan – Site Grading
- Pond Sections
- Detail Sheet (Includes Outlet Control Manhole)

This information is being provided to assist in the EPEA Registration application and is to be used solely for this purpose.

Should you have any questions, please call me at (780) 651-5773 to discuss.

Sincerely,

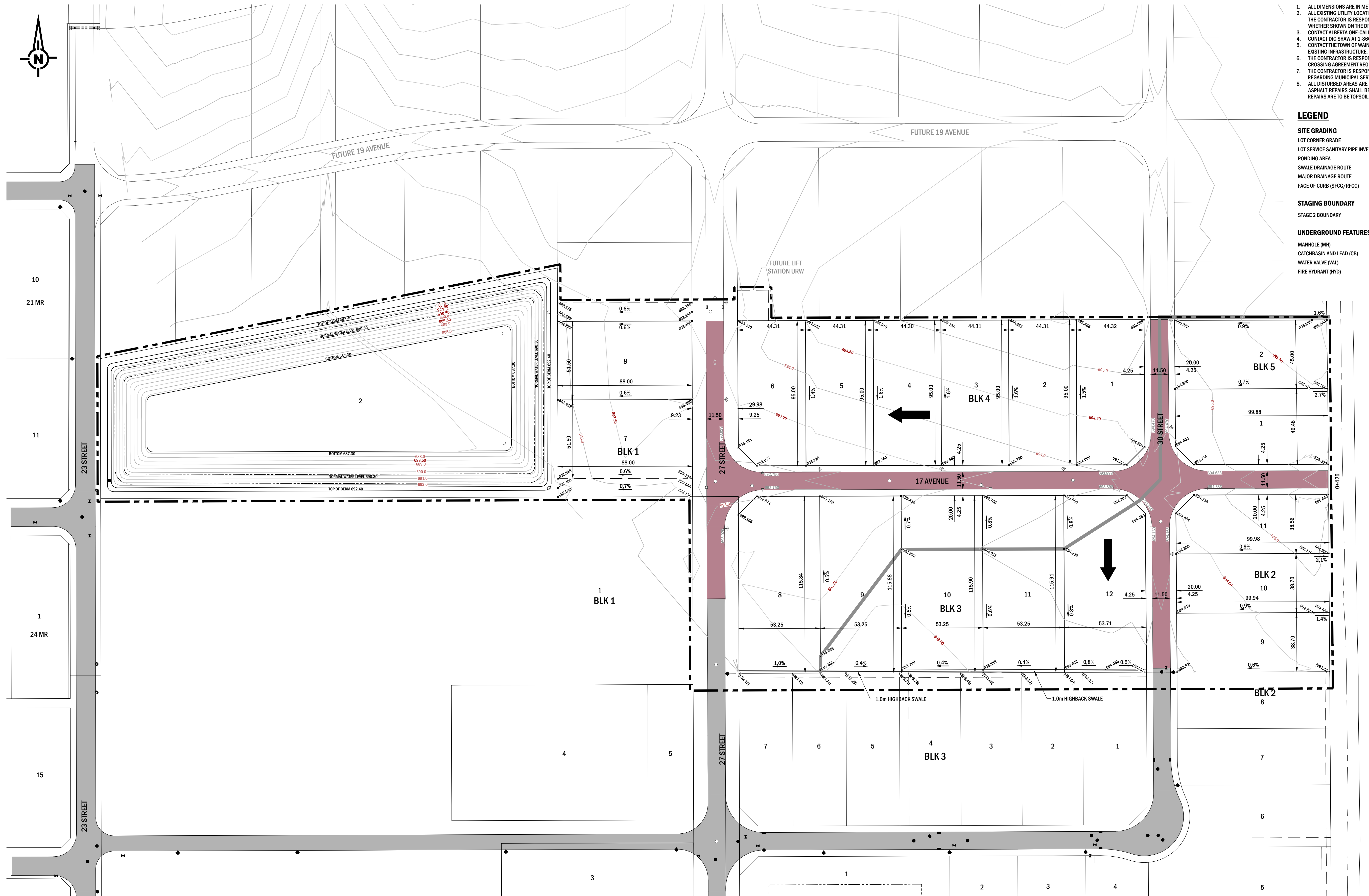
**SELECT ENGINEERING CONSULTANTS LTD.**



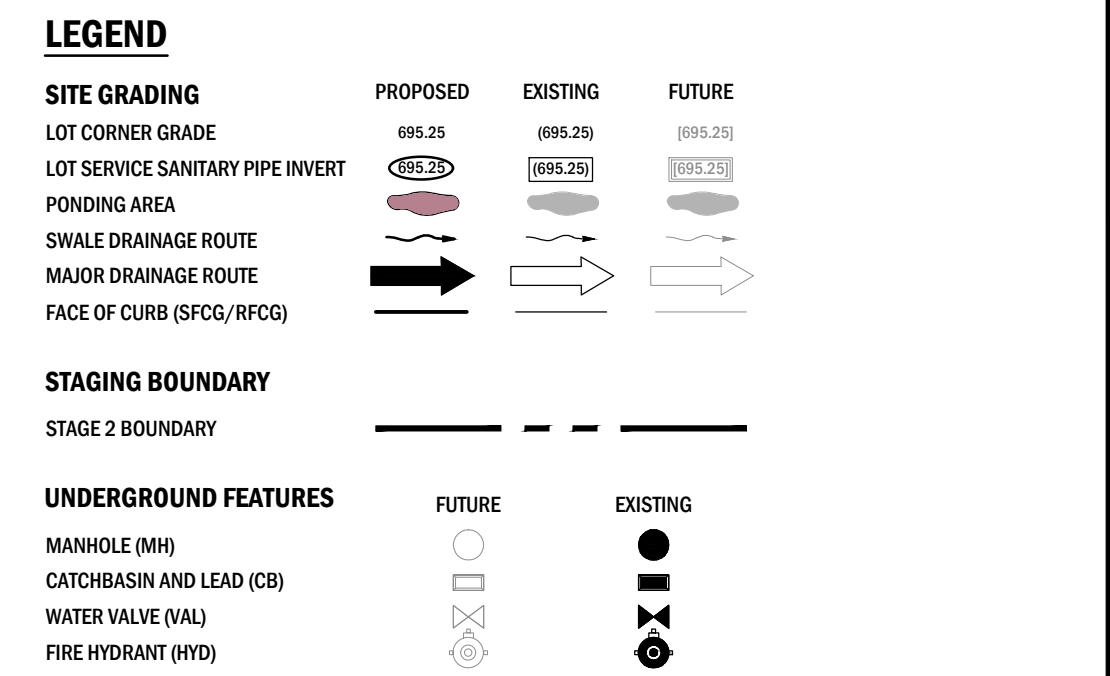
**Neil Renneberg, P.Eng**  
Project Manager  
[nrenneberg@selecteng.ca](mailto:nrenneberg@selecteng.ca)

NR/nr  
Attachment

cc: Scott Flett, Town of Wainwright ([sflett@wainwright.ca](mailto:sflett@wainwright.ca))  
Jeff Franklin, Town of Wainwright ([jfranklin@wainwright.ca](mailto:jfranklin@wainwright.ca))



- GENERAL NOTES**
1. ALL DIMENSIONS ARE IN METRES UNLESS NOTED OTHERWISE.
  2. ALL EXISTING UTILITY LOCATIONS MAY NOT BE SHOWN. ANY EXISTING UTILITIES THAT ARE SHOWN ARE APPROXIMATE. THE CONTRACTOR IS RESPONSIBLE FOR THE VERIFICATION OF LOCATION AND PROTECTION OF ALL EXISTING UTILITIES, WHETHER SHOWN ON THE DRAWINGS OR NOT.
  3. CONTACT ALBERTA ONE-CALL AT 1-800-242-3447 PRIOR TO ANY CONSTRUCTION.
  4. CONTACT DIG SHAW AT 1-866-344-7429 PRIOR TO ANY CONSTRUCTION.
  5. CONTACT THE TOWN OF WAINWRIGHT PUBLIC WORKS DEPARTMENT PRIOR TO ANY EXPOSURE AND CONNECTION TO EXISTING INFRASTRUCTURE.
  6. THE CONTRACTOR IS RESPONSIBLE TO NOTIFY ANY PARTY REQUIRING A CROSSING AGREEMENT AND TO RESPECT ALL CROSSING AGREEMENT REQUIREMENTS.
  7. THE CONTRACTOR IS RESPONSIBLE FOR PROVIDING ADEQUATE NOTICE TO ANY EFFECTED PRIVATE OR PUBLIC SECTOR REGARDING MUNICIPAL SERVICE AND/OR ACCESS DISRUPTIONS.
  8. ALL DISTURBED AREAS ARE TO BE REPAIRED, REPLACED AND/OR LANDSCAPED TO NEW CONDITION. CONCRETE OR ASPHALT REPAIRS SHALL BE CUT AND SQUARED TO THE SATISFACTION OF THE RESIDENT ENGINEER. LANDSCAPED REPAIRS ARE TO BE TOP-SOILED AND SEEDED TO A MINIMUM DEPTH OF 75mm AND MAINTAIN POSITIVE DRAINAGE.



0 12.5 25 37.5 m SCALE 1:1250

Town of Wainwright

PERMIT TO PRACTICE  
SELECT ENGINEERING CONSULTANTS LTD.

Signature: *[Signature]*  
Date: March 22, 2017

PERMIT NUMBER: P10261  
The Association of Professional Engineers,  
Geologists and Geophysicists of Alberta.

PROFESSIONAL ENGINEER ALBERTA  
WILL D. RENNEBERG  
MARCH 22, 2017  
ENGINEER

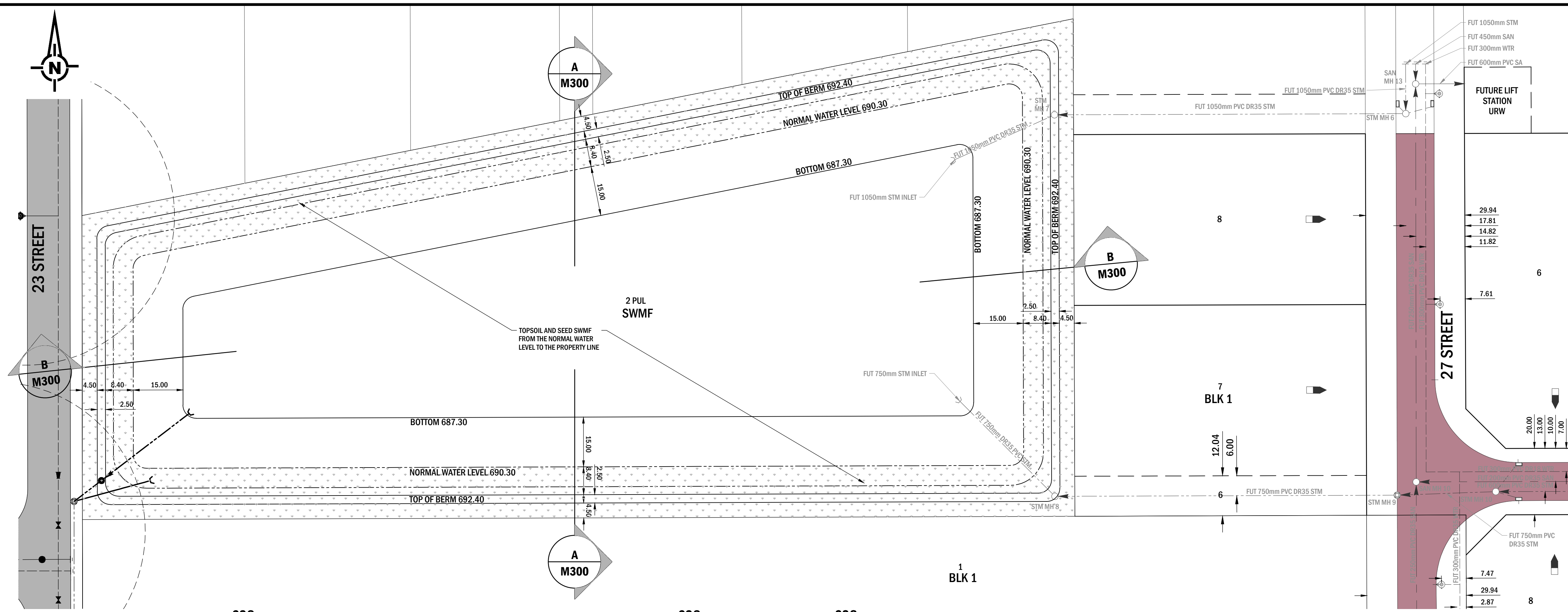
REV	Y	M	D	REVISION DESCRIPTION	DRN	SUPV	DES	CHK	ENG	APP
C	17	03	22	EPEA REGISTRATION	RL	NR	NR	NR	KS	
B	15	03	31	ISSUED FOR BID	JC	NR	NR	NR	KS	
A	15	03	24	ISSUED FOR APPROVAL	JC	NR	NR	NR	KS	

Select Engineering Consultants Ltd.  
Suite 100, 17415 - 107 Avenue NW, Edmonton AB T5S 1E5  
T: 780 651 5777 F: 780 651 5757 www.selecteng.ca

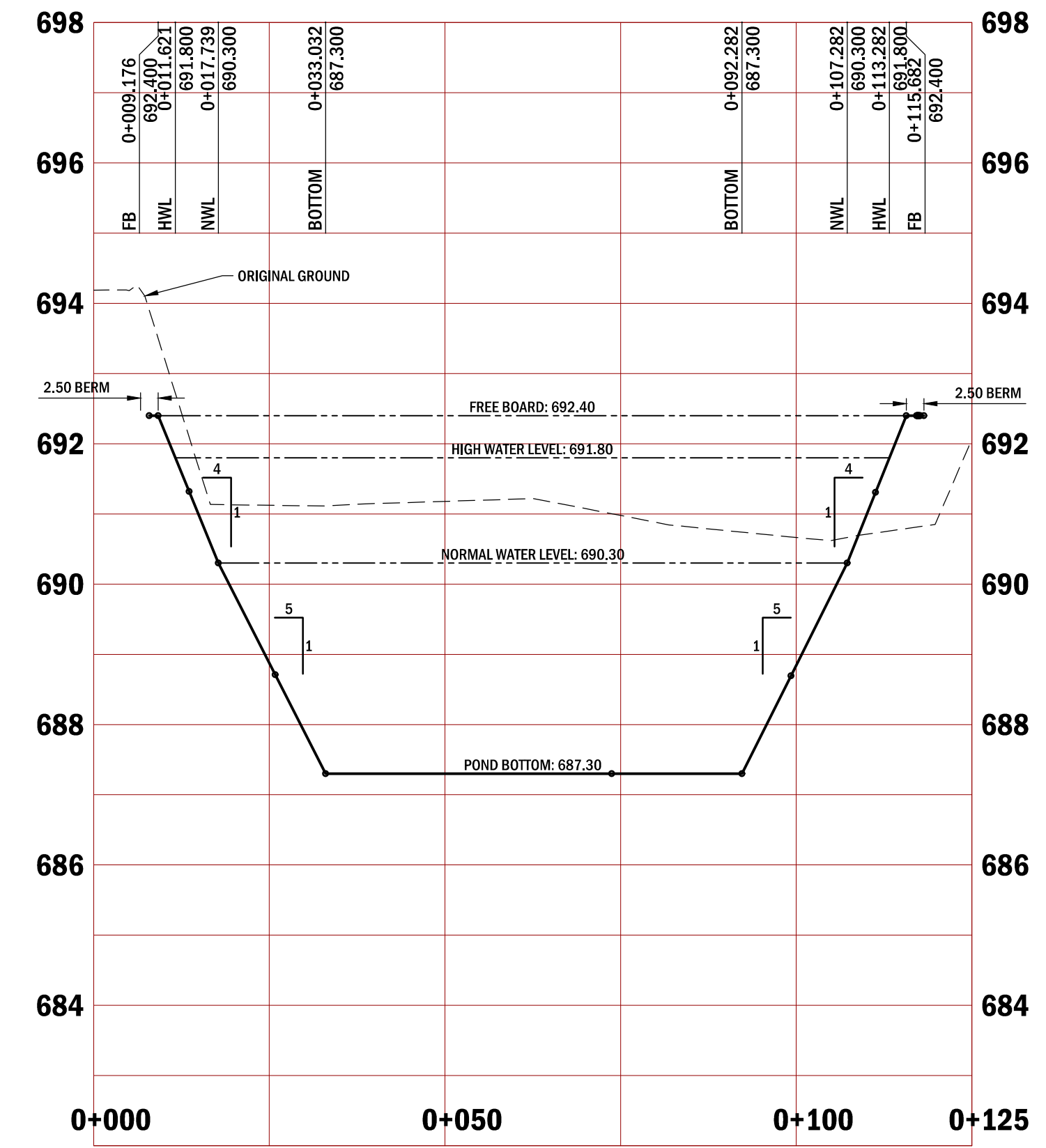
TOWN OF WAINWRIGHT  
14/41 COMMON  
STAGE 2 - SITE GRADING  
OVERALL PLAN  
SITE GRADING

121-15017-M102

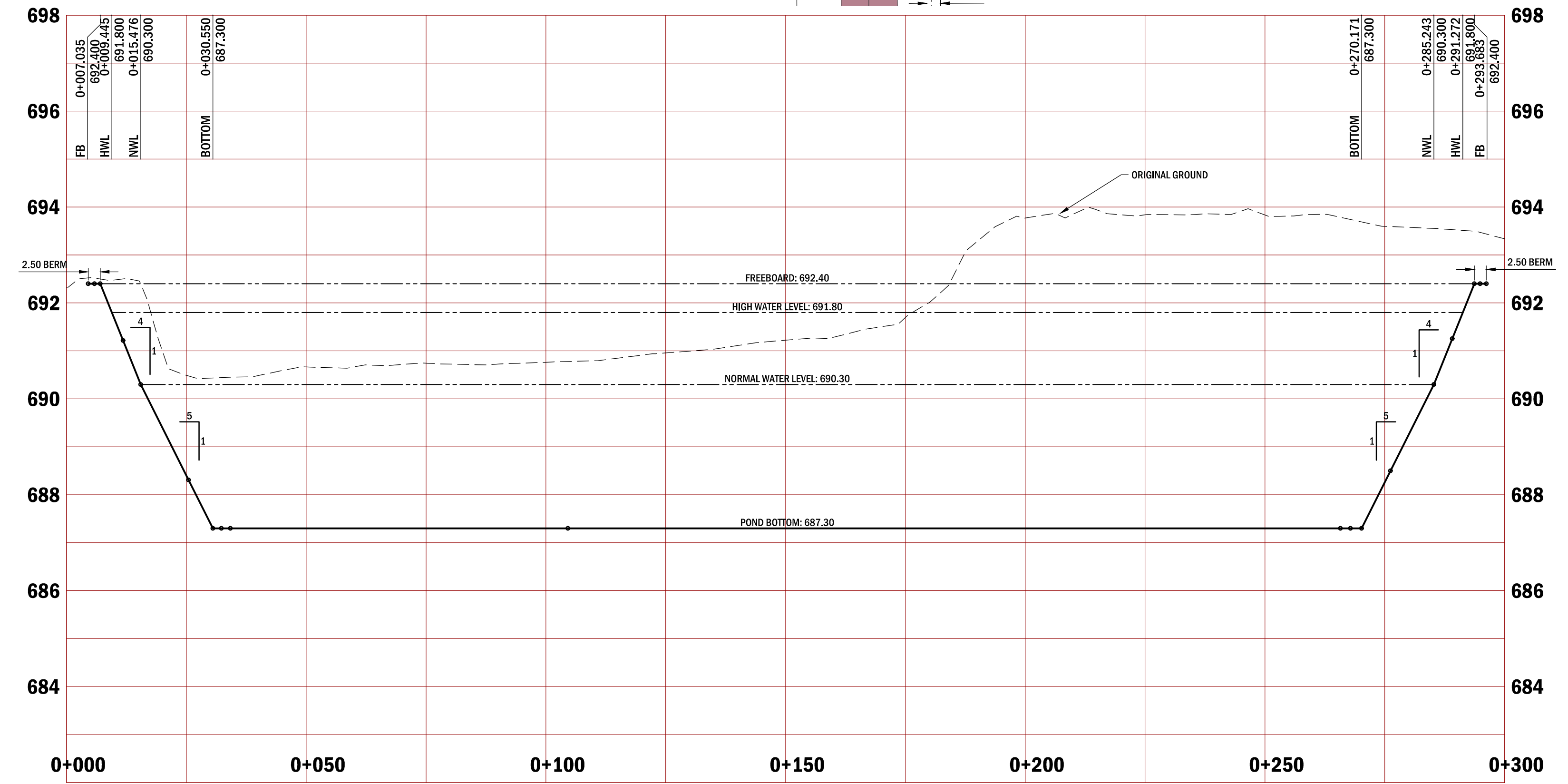
FILENAME: 121-15017-M300.DWG SOURCE: W:\0121-TOWN OF WAINWRIGHT\121-15017-STAGE 2\4.1 INDUSTRIAL SUBDIVISION\3.0 DESIGN PROCESS\3.3 ACAD\3.3.3 WORKING DRAWINGS  
 SAVED BY: JCUNE PLOT DATE: March 22, 2017



- GENERAL NOTES**
- ALL DIMENSIONS ARE IN METRES UNLESS NOTED OTHERWISE.
  - ALL EXISTING UTILITY LOCATIONS MAY NOT BE SHOWN. ANY EXISTING UTILITIES THAT ARE SHOWN ARE APPROXIMATE. THE CONTRACTOR IS RESPONSIBLE FOR THE VERIFICATION OF LOCATION AND PROTECTION OF ALL EXISTING UTILITIES, WHETHER SHOWN ON THE DRAWINGS OR NOT.
  - CONTACT ALBERTA ONE-CALL AT 1-800-242-3447 PRIOR TO ANY CONSTRUCTION.
  - CONTACT DIG SHAW AT 1-888-344-7429 PRIOR TO ANY CONSTRUCTION.
  - CONTACT THE TOWN OF WAINWRIGHT PUBLIC WORKS DEPARTMENT PRIOR TO ANY EXPOSURE AND CONNECTION TO EXISTING INFRASTRUCTURE.
  - THE CONTRACTOR IS RESPONSIBLE TO NOTIFY ANY PARTY REQUIRING A CROSSING AGREEMENT AND TO RESPECT ALL CROSSING AGREEMENT REQUIREMENTS.
  - THE CONTRACTOR IS RESPONSIBLE FOR PROVIDING ADEQUATE NOTICE TO ANY EFFECTED PRIVATE OR PUBLIC SECTOR REGARDING MUNICIPAL SERVICE AND/OR ACCESS DISRUPTIONS.
  - ALL DISTURBED AREAS ARE TO BE REPAIRED, REPLACED AND/OR LANDSCAPED TO NEW CONDITION. CONCRETE OR ASPHALT REPAIRS SHALL BE CUT AND SQUARED TO THE SATISFACTION OF THE RESIDENT ENGINEER. LANDSCAPED REPAIRS ARE TO BE TOPSOILED AND SEEDED TO A MINIMUM DEPTH OF 75mm AND MAINTAIN POSITIVE DRAINAGE.
- LEGEND**
- |                               | PROPOSED | EXISTING |
|-------------------------------|----------|----------|
| SANITARY SEWER (SAN)          |          |          |
| STORM SEWER (STW)             |          |          |
| WATER DISTRIBUTION MAIN (WTR) |          |          |
| MANHOLE (MH)                  |          |          |
| CATCHBASIN MANHOLE (CBMH)     |          |          |
| CATCHBASIN AND LEAD (CB)      |          |          |
| WATER VALVE (VAL)             |          |          |
| FIRE HYDRANT (HYD)            |          |          |
| PLUG                          |          |          |



**CROSS SECTION A**

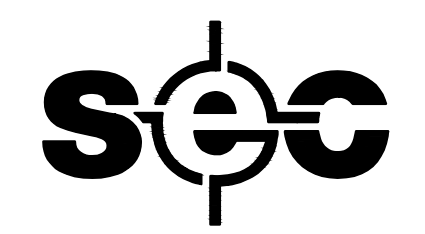
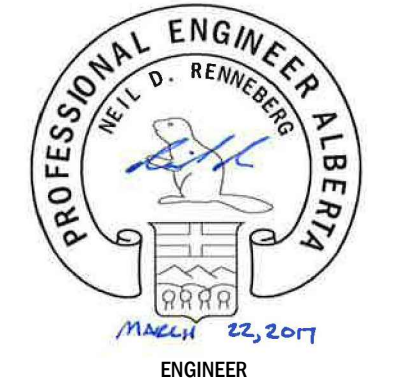


**CROSS SECTION B**

REV	Y	M	D	REVISION DESCRIPTION	DRN	SUPV	DES	CHK	ENG	APP
C	17	03	22	EPEA REGISTRATION	RL		NR		NR	KS
B	15	03	31	ISSUED FOR BID	JC		NR		NR	KS
A	15	03	24	ISSUED FOR APPROVAL	JC		NR		NR	KS



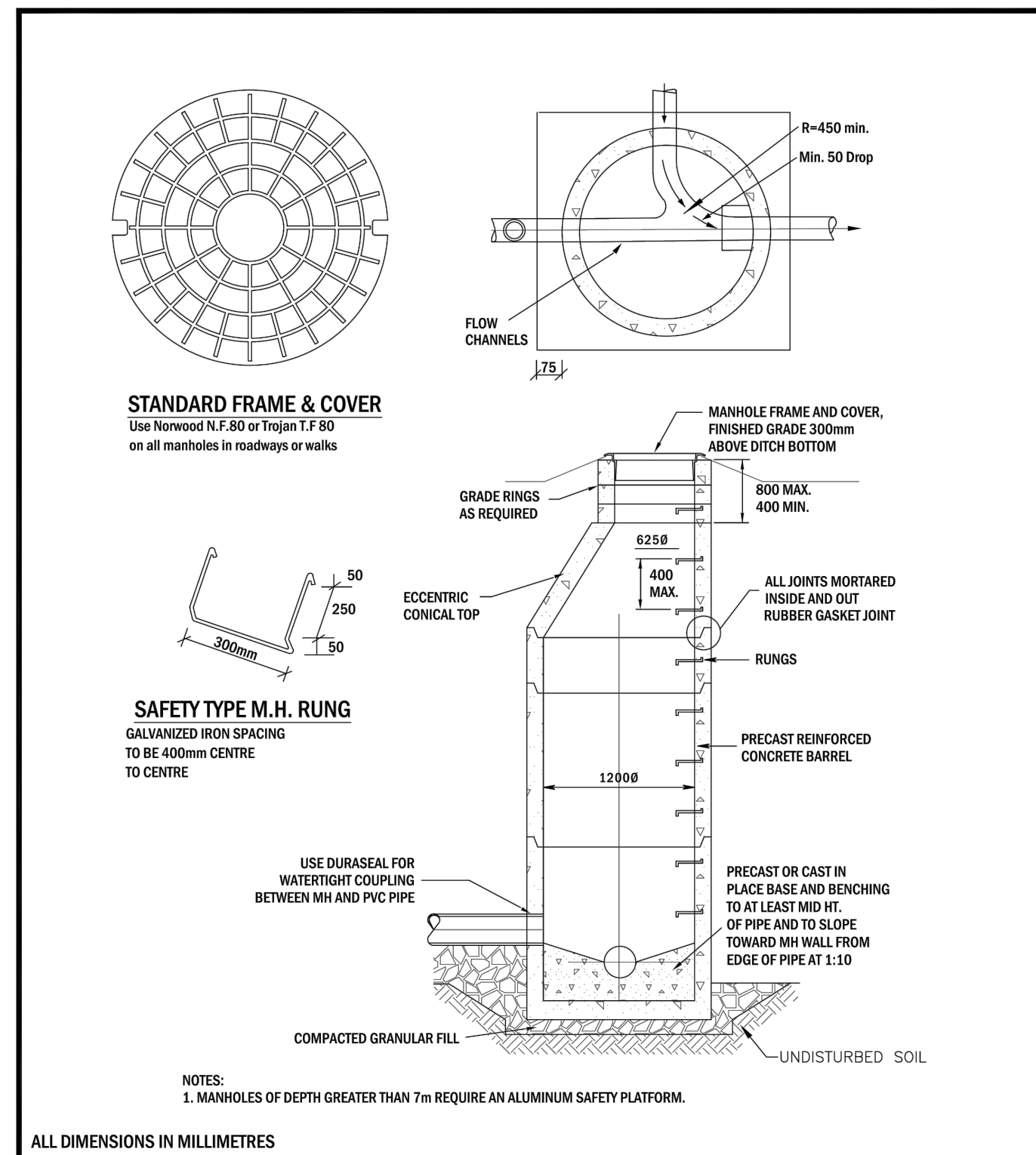
**PERMIT TO PRACTICE**  
 SELECT ENGINEERING CONSULTANTS LTD.  
 Signature: *[Signature]*  
 Date: *March 22, 2017*  
**PERMIT NUMBER: P10261**  
 The Association of Professional Engineers,  
 Geologists and Geophysicists of Alberta.



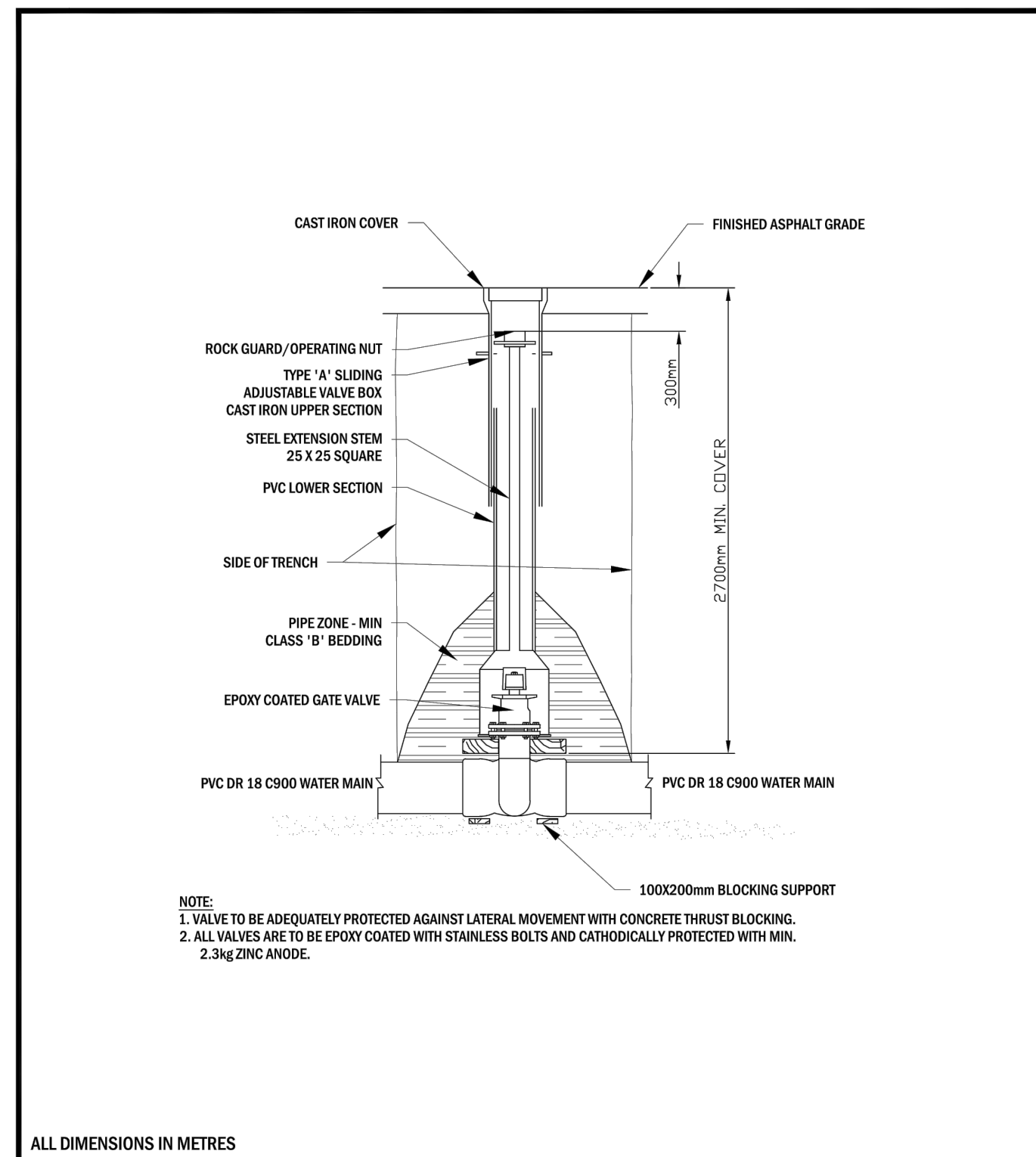
**Select Engineering Consultants Ltd.**  
 Suite 100, 17413 - 107 Avenue NW, Edmonton AB T5S 1E5  
 T: 780 651 5777 F: 780 651 5757 www.selecteng.ca

**TOWN OF WAINWRIGHT**  
**14/41 COMMON**  
**STAGE 2 - SITE GRADING**  
**POND SECTION**  
**121-15017-M300**

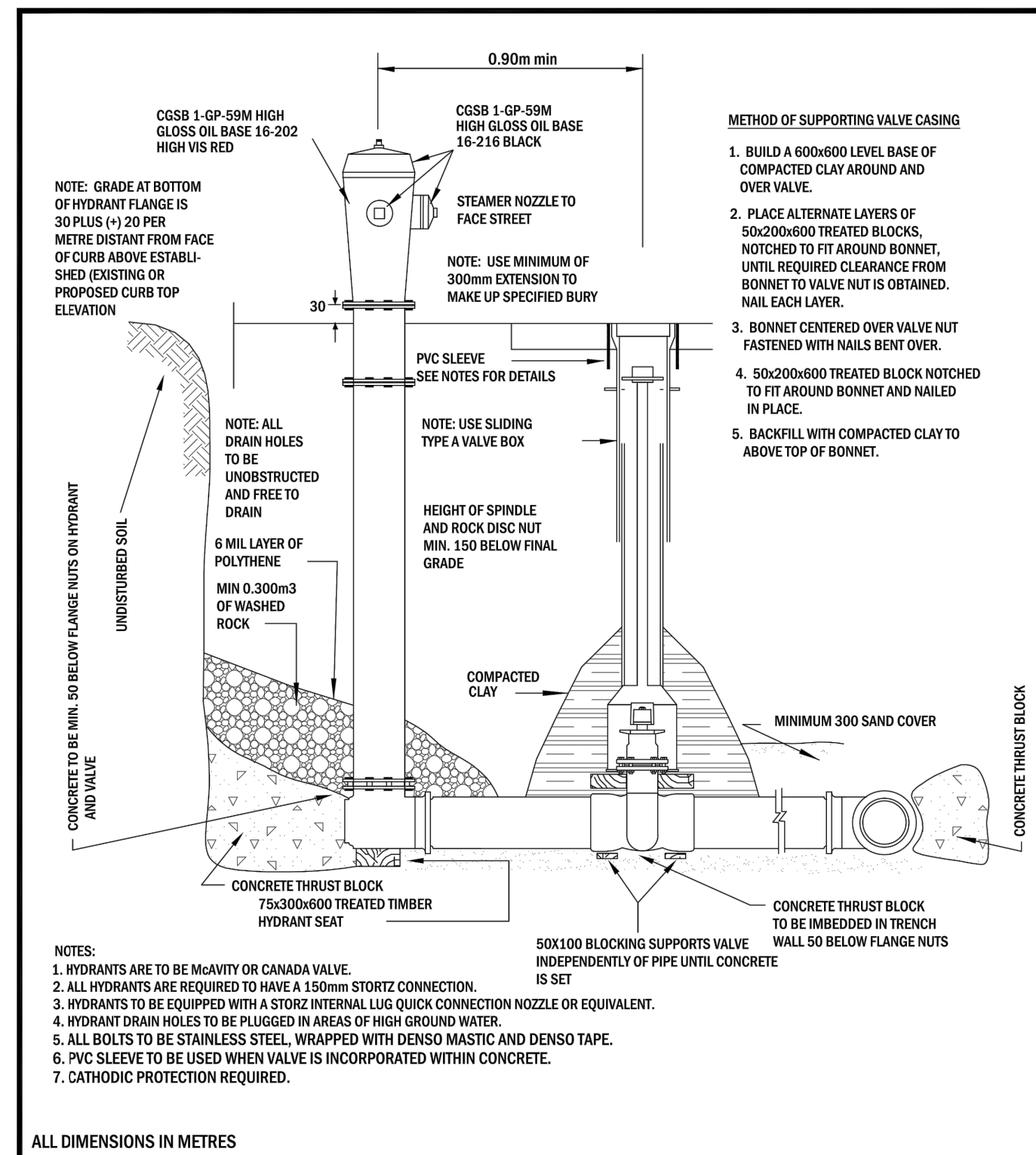
© THIS DOCUMENT IS COPYRIGHT - NO REPRODUCTION IN WHOLE OR IN PART IS PERMITTED WITHOUT THE WRITTEN PERMISSION OF SELECT ENGINEERING CONSULTANTS LTD. - AN ELECTRONIC DATA LICENSE IS REQUIRED FOR DIGITAL VERSION OF THIS DOCUMENT.



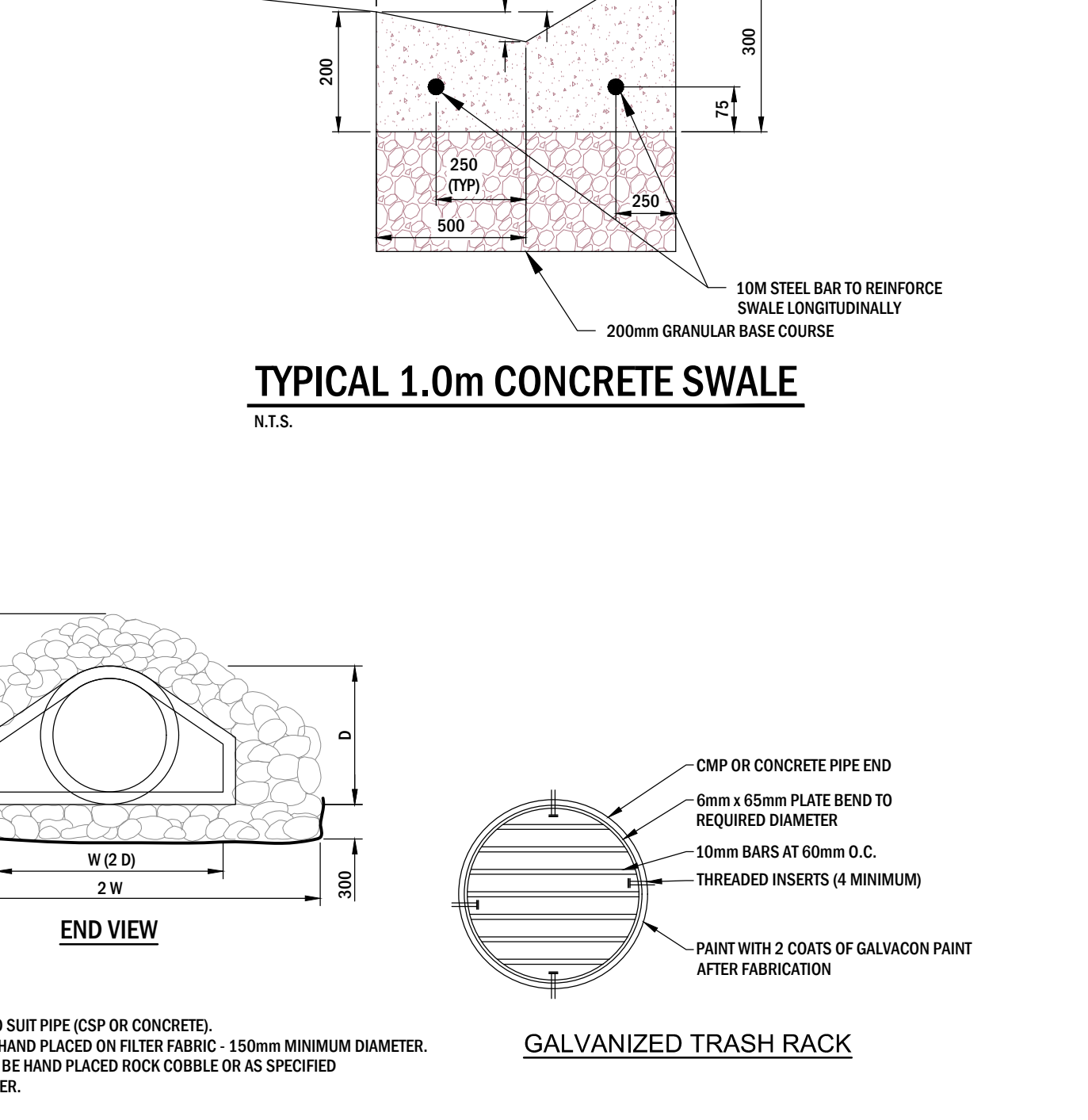
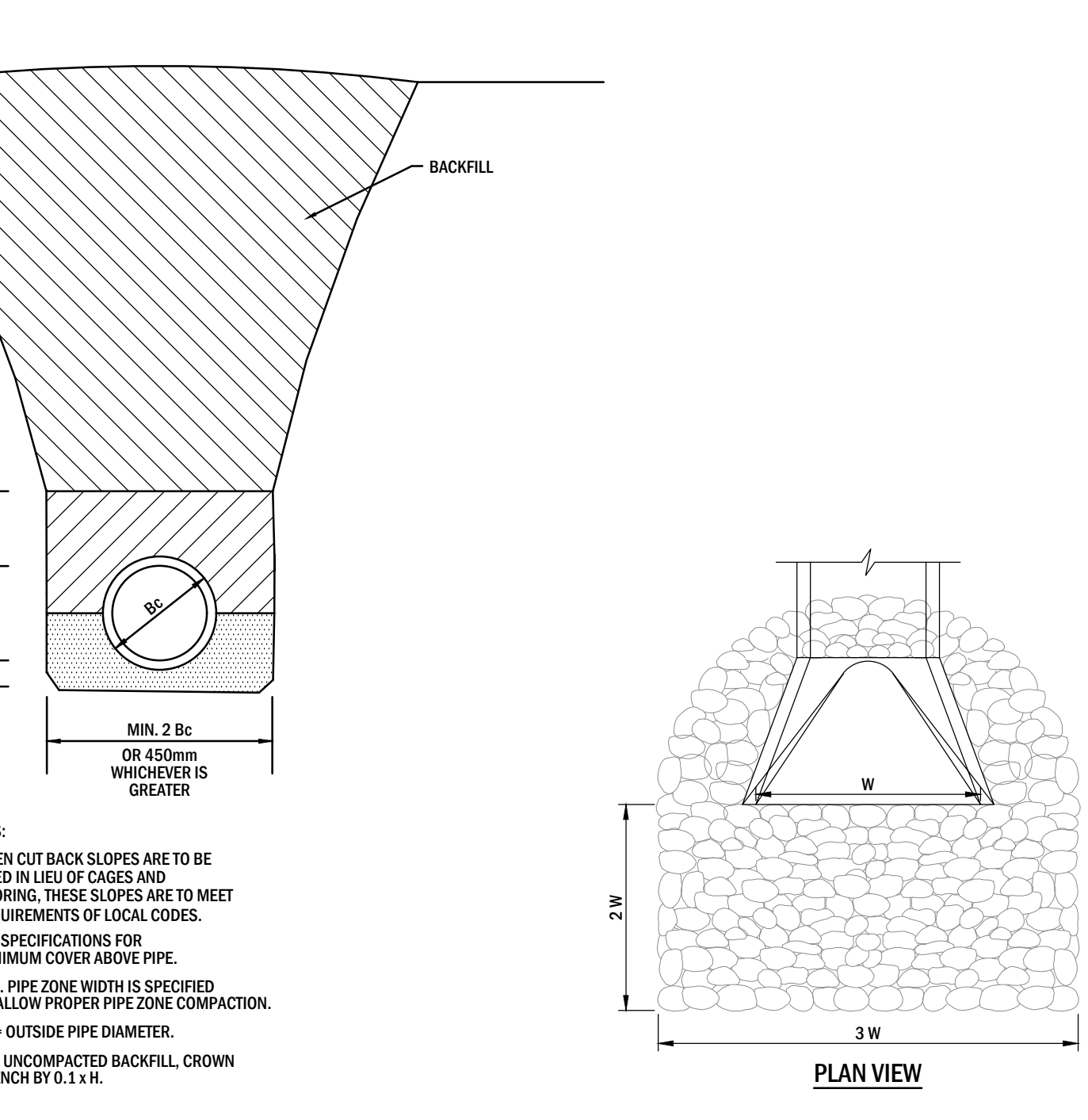
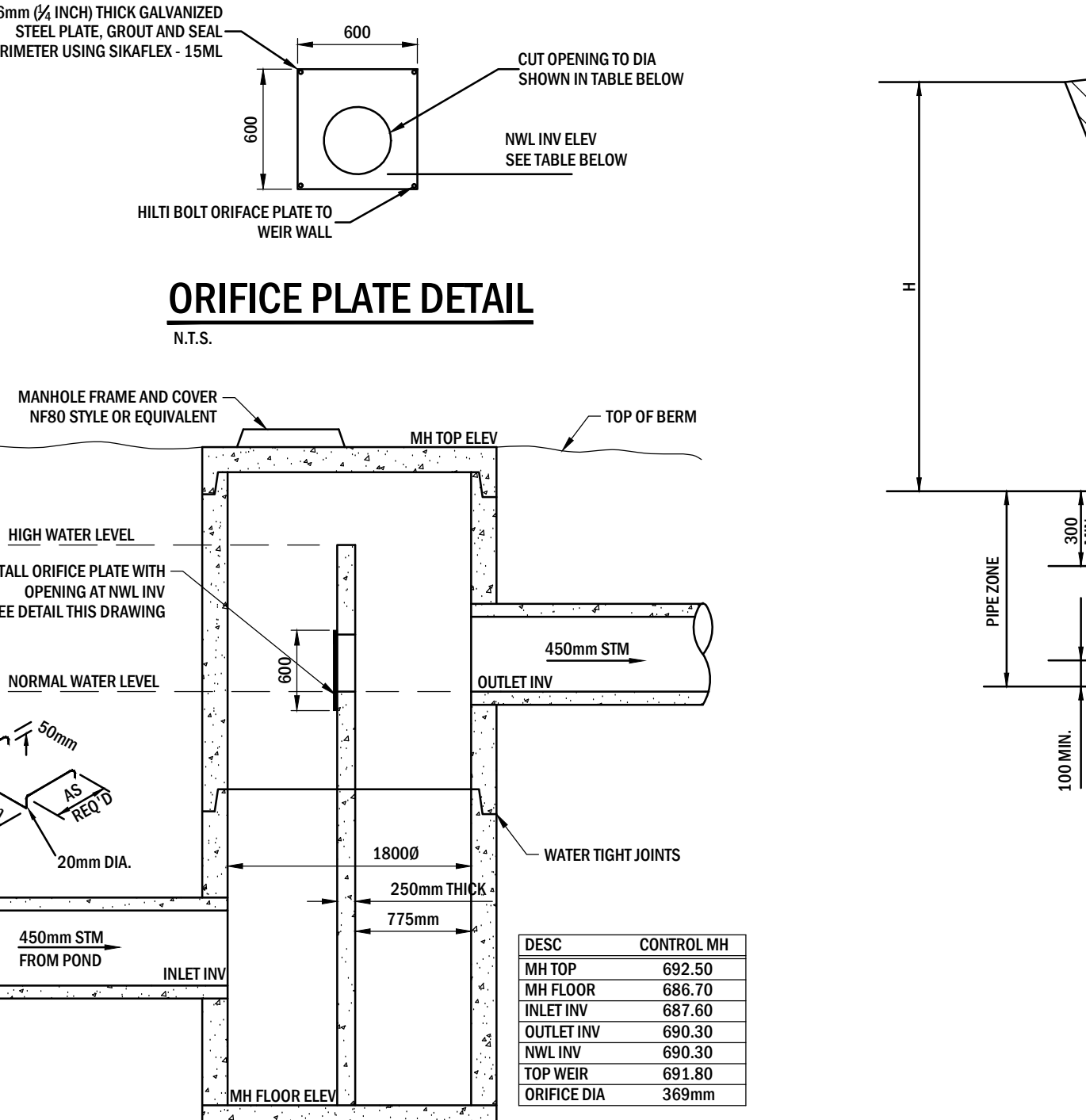
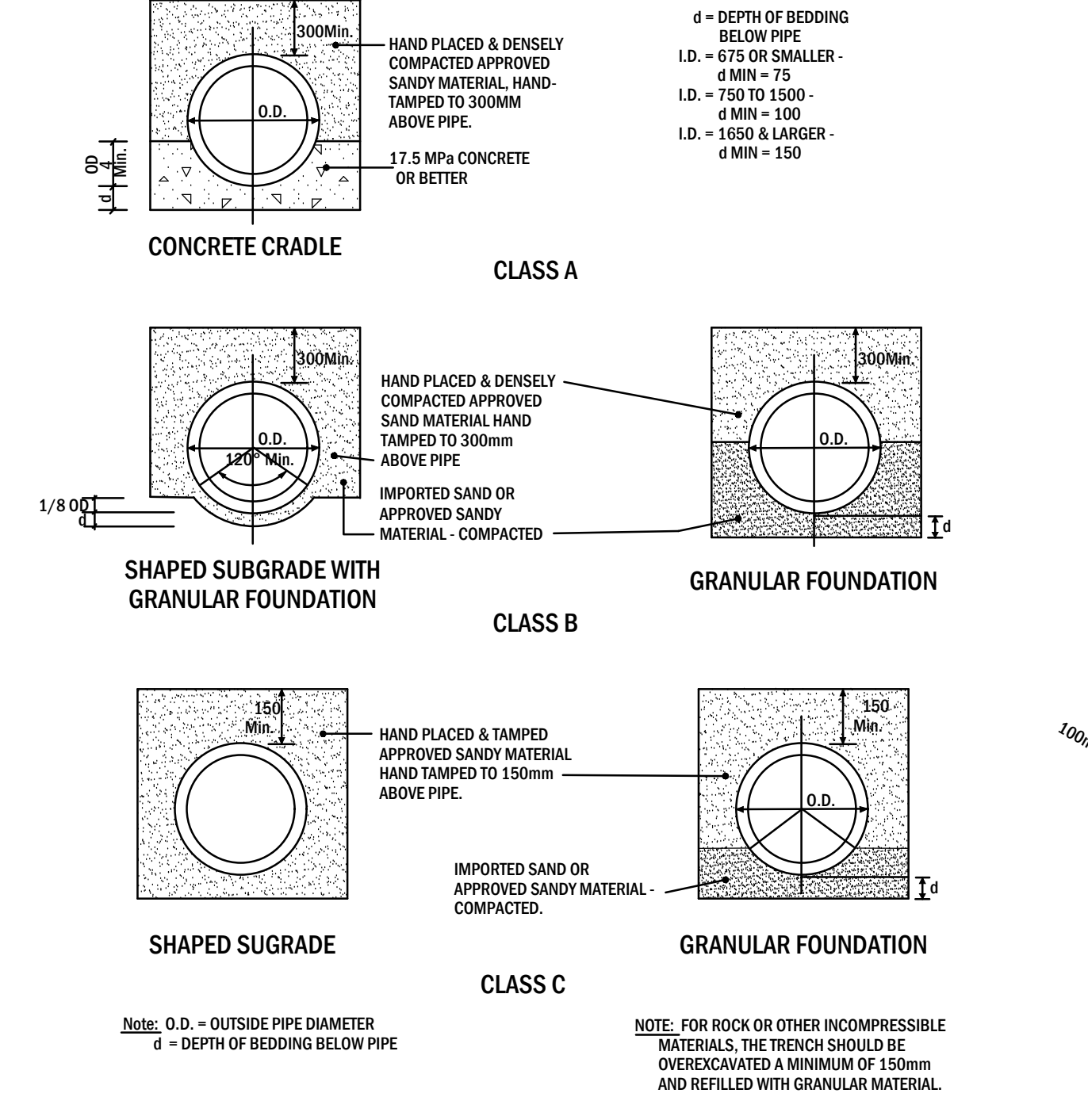
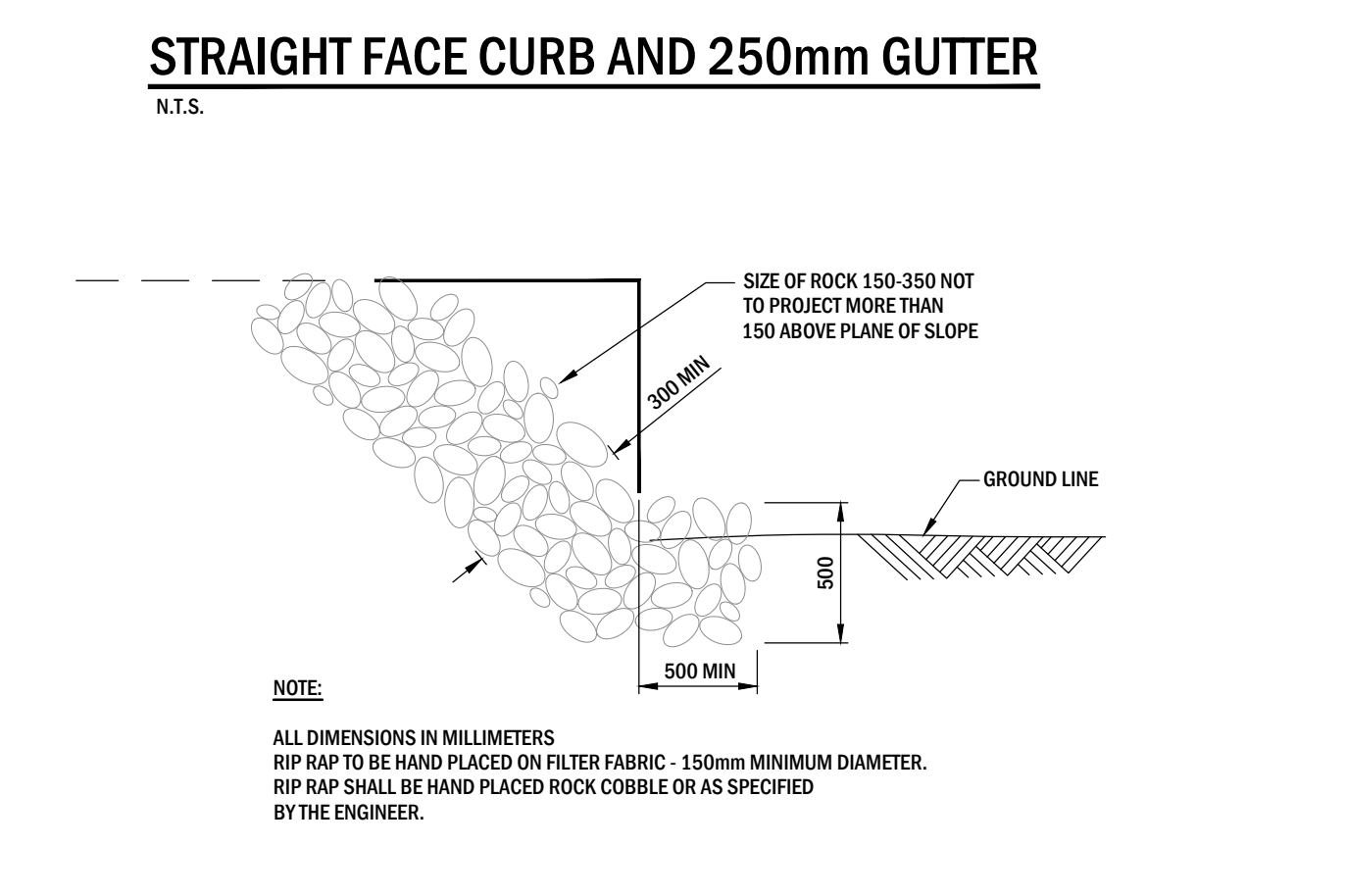
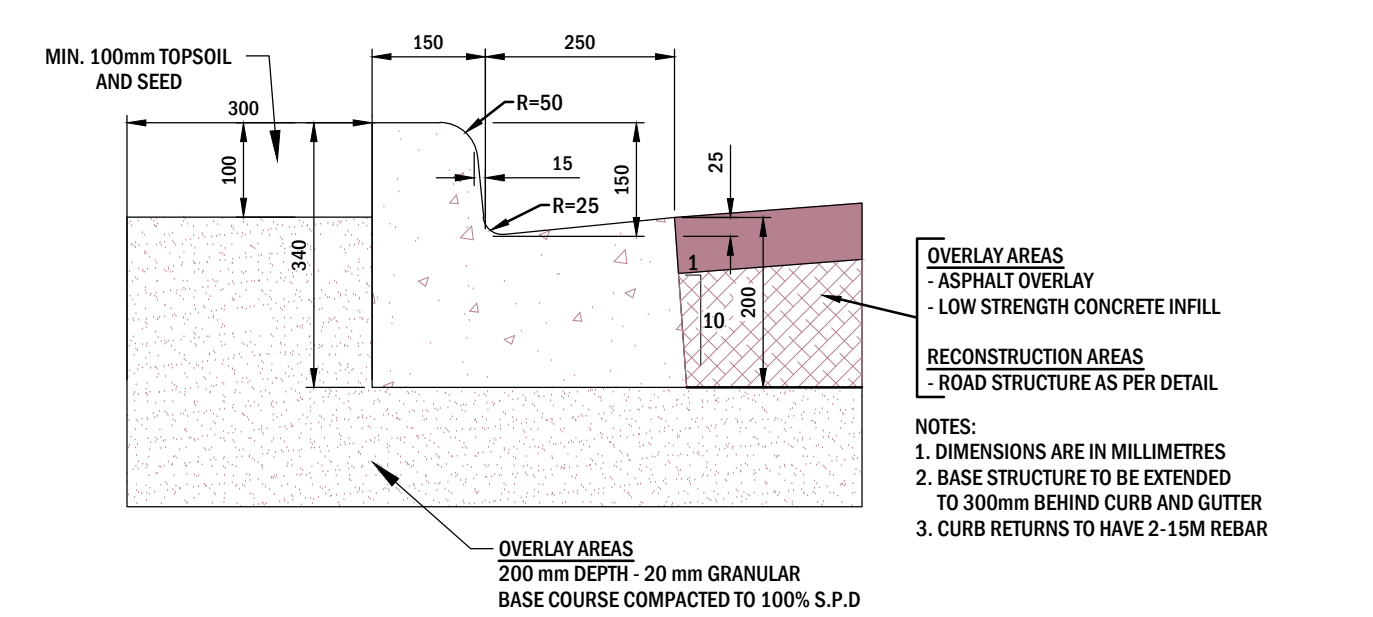
REVISIONS		STANDARD MANHOLE	
DATE	DETAILS	BY	DWG. NO.
			4-01
APPROVED:		DWG. NO.	
CHECKED:		DATE:	
DATE:		SCALE: N.T.S.   DRAWN:	



REVISIONS		WATER VALVE INSTALLATION	
DATE	DETAILS	BY	DWG. NO.
			6-01
APPROVED:		DWG. NO.	
CHECKED:		DATE:	
DATE:		SCALE: N.T.S.   DRAWN:	



REVISIONS		HYDRANT INSTALLATION	
DATE	DETAILS	BY	DWG. NO.
			6-02
APPROVED:		DWG. NO.	
CHECKED:		DATE:	
DATE:		SCALE: N.T.S.   DRAWN:	



PERMIT TO PRACTICE  
SELECT ENGINEERING CONSULTANTS LTD.

Signature: *Mark 23, 2017*

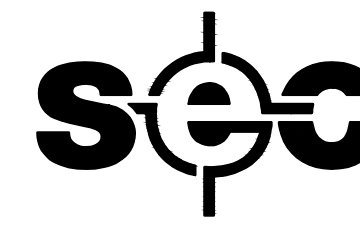
Date: *March 23, 2017*

PERMIT NUMBER: P10261

The Association of Professional Engineers, Geologists and Geophysicists of Alberta.



REV	Y	M	D	REVISION DESCRIPTION	DRN	SUPV	DES	CHK	ENG	APP
C	17	03	22	EPEA REGISTRATION	RL	NR	NR	NR	KS	
B	15	03	31	ISSUED FOR BID	JC	NR	NR	NR	KS	
A	15	03	24	ISSUED FOR APPROVAL	JC	NR	NR	NR	KS	



Select Engineering Consultants Ltd.  
Suite 100, 17413 - 107 Avenue NW, Edmonton AB T5S 1E5  
T: 780 651 5777 F: 780 651 5757 www.selecteng.ca

TOWN OF WAINWRIGHT  
14/41 COMMON  
STAGE 2 - SITE GRADING

DETAILS

121-15017-M400